

INTS1 Recombinant Matched Antibody Pair, PBS Only

Catalog Number: **MP01233-3**

Capture Antibody Information

Catalog Number:
84339-4-PBS

Host:
Rabbit

Isotype:
IgG

Purification Method:
Protein A purification

Clone ID:
241627F5

Reactivity:
human

GenBank:
BC069262

Immunogen Catalog Number:
Ag35428

Conjugate:
Unconjugated

Full name:
integrator complex subunit 1

Gene ID:
26173

Detection Antibody Information

Catalog Number:
84339-3-PBS

Host:
Rabbit

Isotype:
IgG

Purification Method:
Protein A purification

Clone ID:
241627E12

Reactivity:
human

GenBank:
BC069262

Immunogen Catalog Number:
Ag35428

Conjugate:
Unconjugated

Full name:
integrator complex subunit 1

Gene ID:
26173

Applications

Tested Applications:
Cytometric bead array, Sandwich ELISA

Range:
0.625-80 ng/mL (Cytometric Bead Array)
0.313-20 ng/mL (Sandwich ELISA)

Recommended Dilutions:
It is recommended that this reagent should be titrated in each testing system to obtain optimal results.

Product Information

MP01233-3 targets INTS1 in immunoassays as a matched antibody pair. Validated in Cytometric bead array, Sandwich ELISA.

Capture antibody: INTS1 Recombinant antibody, PBS Only (Capture) 84339-4-PBS (241627F5). 100 µg. Concentration 1 mg/mL.

Detection antibody: INTS1 Recombinant antibody, PBS Only (Detector) 84339-3-PBS (241627E12). 100 µg. Concentration 1 mg/mL.

Unconjugated rabbit recombinant monoclonal antibody pair in PBS only storage buffer at a concentration of 1 mg/mL, ready for conjugation. Created using Proteintech's proprietary in-house recombinant technology. Recombinant production enables unrivalled batch-to-batch consistency, easy scale-up, and future security of supply.

Matched antibody pairs are designed for use in a variety of assays and platforms that require matched antibody pairs.

Antibody use should be optimized for each application and assay.

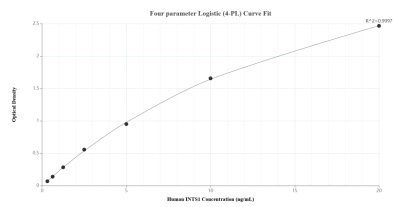
Storage

Storage:
Store at -80°C.

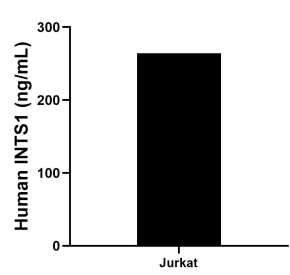
The product is shipped with ice packs. Upon receipt, store it immediately at -80°C

Storage buffer:
PBS only

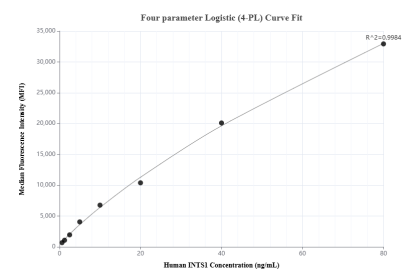
Selected Validation Data



Sandwich ELISA standard curve of MP01233-3, Human INTS1 Recombinant Matched Antibody Pair - PBS only. 84339-4-PBS was coated to a plate as the capture antibody and incubated with serial dilutions of standard Ag35428. 84339-3-PBS was HRP conjugated as the detection antibody. Range: 0.313-20 ng/mL.



The mean INTS1 concentration was determined to be 264.26 ng/mL in Jurkat cell extract based on a 1.50 mg/mL extract load.



Cytometric bead array standard curve of MP01233-3, INTS1 Recombinant Matched Antibody Pair, PBS Only. Capture antibody: 84339-4-PBS. Detection antibody: 84339-3-PBS. Standard: Ag35428. Range: 0.625-80 ng/mL.