

# CCT5 Recombinant Matched Antibody Pair, PBS Only

Catalog Number: MP01209-1

## Capture Antibody Information

**Catalog Number:**  
84310-2-PBS

**Host:**  
Rabbit

**Isotype:**  
IgG

**Purification Method:**  
Protein A purification

**Clone ID:**  
241510B3

**Reactivity:**  
human

**GenBank:**  
BC035499

**Immunogen Catalog Number:**  
Ag2146

**Conjugate:**  
Unconjugated

**Full name:**  
chaperonin containing TCP1, subunit 5 (epsilon)

**Gene ID:**  
22948

## Detection Antibody Information

**Catalog Number:**  
84310-1-PBS

**Host:**  
Rabbit

**Isotype:**  
IgG

**Purification Method:**  
Protein A purification

**Clone ID:**  
241510B1

**Reactivity:**  
human

**GenBank:**  
BC035499

**Immunogen Catalog Number:**  
Ag2146

**Conjugate:**  
Unconjugated

**Full name:**  
chaperonin containing TCP1, subunit 5 (epsilon)

**Gene ID:**  
22948

## Applications

**Tested Applications:**  
Cytometric bead array, Sandwich ELISA

**Range:**  
0.469-60 ng/mL (Cytometric Bead Array)  
156-5000 pg/mL (Sandwich ELISA)

**Recommended Dilutions:**  
It is recommended that this reagent should be titrated in each testing system to obtain optimal results.

## Product Information

MP01209-1 targets CCT5 in immunoassays as a matched antibody pair. Validated in Cytometric bead array, Sandwich ELISA.

Capture antibody: CCT5 Recombinant antibody, PBS Only (Capture) 84310-2-PBS (241510B3). 100 µg. Concentration 1 mg/mL.

Detection antibody: CCT5 Recombinant antibody, PBS Only (Detector) 84310-1-PBS (241510B1). 100 µg. Concentration 1 mg/mL.

Unconjugated rabbit recombinant monoclonal antibody pair in PBS only storage buffer at a concentration of 1 mg/mL, ready for conjugation. Created using Proteintech's proprietary in-house recombinant technology. Recombinant production enables unrivalled batch-to-batch consistency, easy scale-up, and future security of supply.

Matched antibody pairs are designed for use in a variety of assays and platforms that require matched antibody pairs.

Antibody use should be optimized for each application and assay.

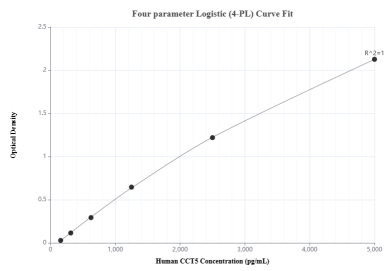
## Storage

**Storage:**  
Store at -80°C.

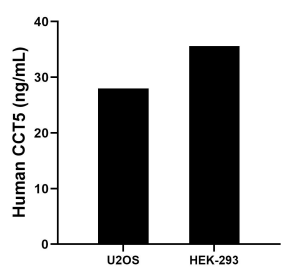
**The product is shipped with ice packs. Upon receipt, store it immediately at -80°C**

**Storage buffer:**  
PBS only

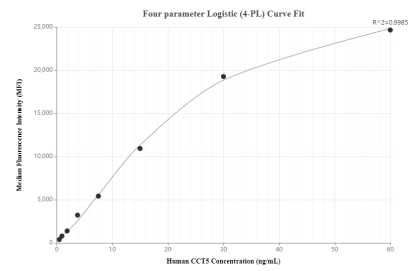
## Selected Validation Data



Sandwich ELISA standard curve of MP01209-1, Human CCT5 Recombinant Matched Antibody Pair - PBS only. 84310-2-PBS was coated to a plate as the capture antibody and incubated with serial dilutions of standard Ag2146. 84310-1-PBS was HRP conjugated as the detection antibody. Range: 156-5000 pg/mL



The mean CCT5 concentration was determined to be 28.01 ng/mL in U2OS cell extract based on a 3.1 mg/mL extract load and 35.60 ng/mL in HEK-293 cell extract based on a 2.0 mg/mL extract load.



Cytometric bead array standard curve of MP01209-1, CCT5 Recombinant Matched Antibody Pair, PBS Only. Capture antibody: 84310-2-PBS. Detection antibody: 84310-1-PBS. Standard: Ag2146. Range: 0.469-60 ng/mL