

NME3 Recombinant Matched Antibody Pair, PBS Only

Catalog Number: **MP01200-3**

Capture Antibody Information

Catalog Number:
84278-3-PBS

Host:
Rabbit

Isotype:
IgG

Purification Method:
Protein A purification

Clone ID:
241585G1

Reactivity:
human

GenBank:
BC000250

Immunogen Catalog Number:
Ag7284

Conjugate:
Unconjugated

Full name:
non-metastatic cells 3, protein expressed in

Gene ID:
4832

Detection Antibody Information

Catalog Number:
84278-4-PBS

Host:
Rabbit

Isotype:
IgG

Purification Method:
Protein A purification

Clone ID:
241585G8

Reactivity:
human

GenBank:
BC000250

Immunogen Catalog Number:
Ag7284

Conjugate:
Unconjugated

Full name:
non-metastatic cells 3, protein expressed in

Gene ID:
4832

Applications

Tested Applications:
Cytometric bead array, Sandwich ELISA

Range:
0.313-40 ng/mL (Cytometric Bead Array)
3.13-200 ng/mL (Sandwich ELISA)

Recommended Dilutions:
It is recommended that this reagent should be titrated in each testing system to obtain optimal results.

Product Information

MP01200-3 targets NME3 in immunoassays as a matched antibody pair. Validated in Cytometric bead array, Sandwich ELISA.

Capture antibody: NME3 Recombinant antibody, PBS Only (Capture) 84278-3-PBS (241585G1). 100 µg. Concentration 1 mg/mL.

Detection antibody: NME3 Recombinant antibody, PBS Only (Detector) 84278-4-PBS (241585G8). 100 µg. Concentration 1 mg/mL.

Unconjugated rabbit recombinant monoclonal antibody pair in PBS only storage buffer at a concentration of 1 mg/mL, ready for conjugation. Created using Proteintech's proprietary in-house recombinant technology. Recombinant production enables unrivalled batch-to-batch consistency, easy scale-up, and future security of supply.

Matched antibody pairs are designed for use in a variety of assays and platforms that require matched antibody pairs.

Antibody use should be optimized for each application and assay.

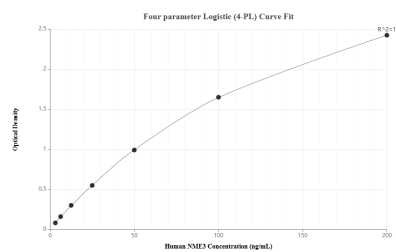
Storage

Storage:
Store at -80°C.

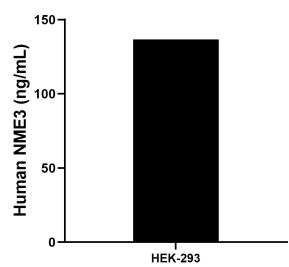
The product is shipped with ice packs. Upon receipt, store it immediately at -80°C

Storage buffer:
PBS only

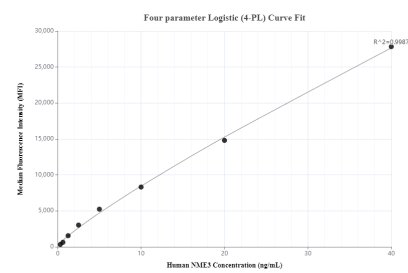
Selected Validation Data



Sandwich ELISA standard curve of MP01200-3, Human NME3 Recombinant Matched Antibody Pair - PBS only. 84278-3-PBS was coated to a plate as the capture antibody and incubated with serial dilutions of standard Ag7284. 84278-4-PBS was HRP conjugated as the detection antibody. Range: 3.13-200 ng/mL



The mean NME3 concentration was determined to be 136.5 ng/mL in HEK-293 cell extract based on a 1.5 mg/mL extract load.



Cytometric bead array standard curve of MP01200-3, NME3 Recombinant Matched Antibody Pair, PBS Only. Capture antibody: 84278-3-PBS. Detection antibody: 84278-4-PBS. Standard: Ag7284. Range: 0.313-40 ng/mL