

# C7 Recombinant Matched Antibody Pair, PBS Only

Catalog Number: **MP01179-4**

## Capture Antibody Information

Catalog Number:  
84263-2-PBS  
Host:  
Rabbit  
Isotype:  
IgG  
Purification Method:  
Protein A purification

Clone ID:  
241551C11  
Reactivity:  
human  
GenBank:  
NM\_000587.4  
Immunogen Catalog Number:  
Eg1202

Conjugate:  
Unconjugated  
Full name:  
complement component 7  
Gene ID:  
730

## Detection Antibody Information

Catalog Number:  
84263-4-PBS  
Host:  
Rabbit  
Isotype:  
IgG  
Purification Method:  
Protein A purification

Clone ID:  
241551B8  
Reactivity:  
human  
GenBank:  
NM\_000587.4  
Immunogen Catalog Number:  
Eg1202

Conjugate:  
Unconjugated  
Full name:  
complement component 7  
Gene ID:  
730

## Applications

Tested Applications:  
Sandwich ELISA

Range:  
39.1-2500 pg/mL (Sandwich ELISA)

Recommended Dilutions:  
It is recommended that this reagent should be titrated in each testing system to obtain optimal results.

## Product Information

MP01179-4 targets C7 in immunoassays as a matched antibody pair. Validated in Sandwich ELISA.

Capture antibody: Complement component C7/C7 Recombinant antibody, PBS Only (Capture/Detector) 84263-2-PBS (241551C11). 100 µg. Concentration 1 mg/mL.

Detection antibody: Complement component C7/C7 Recombinant antibody, PBS Only (Capture/Detector) 84263-4-PBS (241551B8). 100 µg. Concentration 1 mg/mL.

Unconjugated rabbit recombinant monoclonal antibody pair in PBS only storage buffer at a concentration of 1 mg/mL, ready for conjugation. Created using Proteintech's proprietary in-house recombinant technology. Recombinant production enables unrivalled batch-to-batch consistency, easy scale-up, and future security of supply.

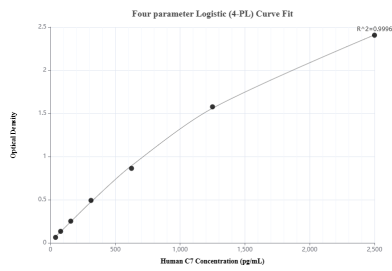
Matched antibody pairs are designed for use in a variety of assays and platforms that require matched antibody pairs.

Antibody use should be optimized for each application and assay.

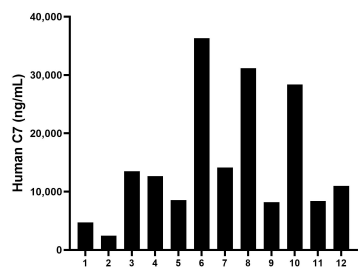
## Storage

Storage:  
Store at -80°C.  
The product is shipped with ice packs. Upon receipt, store it immediately at -80°C  
Storage buffer:  
PBS only

## Selected Validation Data



Sandwich ELISA standard curve of MP01179-4, Human C7 Recombinant Matched Antibody Pair - PBS only. 84263-2-PBS was coated to a plate as the capture antibody and incubated with serial dilutions of standard Eg1202. 84263-4-PBS was HRP conjugated as the detection antibody. Range: 39.1-2500 pg/mL



Serum of twelve individual healthy human donors was measured. The human C7 concentration of detected samples was determined to be 14,954.75 ng/mL with a range of 2,439.43 - 36,317.82 ng/mL.