

TRAIL/CD253 Recombinant Matched Antibody Pair, PBS Only

Catalog Number: **MP01166-1**

Capture Antibody Information

Catalog Number:
84280-2-PBS

Host:
Rabbit

Isotype:
IgG

Purification Method:
Protein A purification

Clone ID:
241419A2

Reactivity:
human

GenBank:
BC032722

Conjugate:
Unconjugated

Full name:
tumor necrosis factor (ligand) superfamily, member 10

Gene ID:
8743

Detection Antibody Information

Catalog Number:
84280-1-PBS

Host:
Rabbit

Isotype:
IgG

Purification Method:
Protein A purification

Clone ID:
241419C12

Reactivity:
human

GenBank:
BC032722

Conjugate:
Unconjugated

Full name:
tumor necrosis factor (ligand) superfamily, member 10

Gene ID:
8743

Applications

Tested Applications:
Cytometric bead array, Sandwich ELISA

Range:
0.313-40 ng/mL (Cytometric Bead Array)
12.5-800 pg/mL (Sandwich ELISA)

Recommended Dilutions:
It is recommended that this reagent should be titrated in each testing system to obtain optimal results.

Product Information

MP01166-1 targets TRAIL/CD253 in immunoassays as a matched antibody pair. Validated in Cytometric bead array, Sandwich ELISA.

Capture antibody: TRAIL/CD253 Recombinant antibody, PBS Only (Capture) 84280-2-PBS (241419A2). 100 µg. Concentration 1 mg/mL.

Detection antibody: TRAIL/CD253 Recombinant antibody, PBS Only (Detector) 84280-1-PBS (241419C12). 100 µg. Concentration 1 mg/mL.

Unconjugated rabbit recombinant monoclonal antibody pair in PBS only storage buffer at a concentration of 1 mg/mL, ready for conjugation. Created using Proteintech's proprietary in-house recombinant technology. Recombinant production enables unrivalled batch-to-batch consistency, easy scale-up, and future security of supply.

Matched antibody pairs are designed for use in a variety of assays and platforms that require matched antibody pairs.

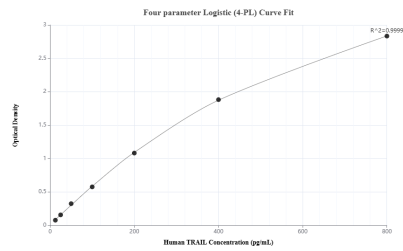
Antibody use should be optimized for each application and assay.

Storage

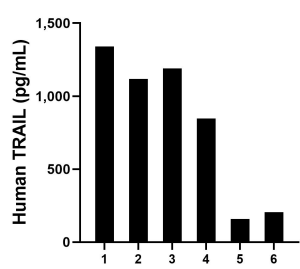
Storage:
Store at -80°C.
The product is shipped with ice packs. Upon receipt, store it immediately at -80°C

Storage buffer:
PBS only

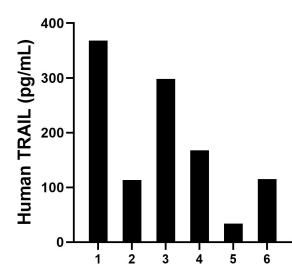
Selected Validation Data



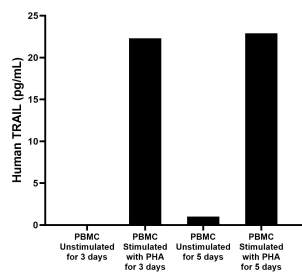
Sandwich ELISA standard curve of MP01166-1, Human TRAIL Recombinant Matched Antibody Pair - PBS only. 84280-2-PBS was coated to a plate as the capture antibody and incubated with serial dilutions of standard RP02339. 84280-1-PBS was HRP conjugated as the detection antibody. Range: 12.5-800 pg/mL



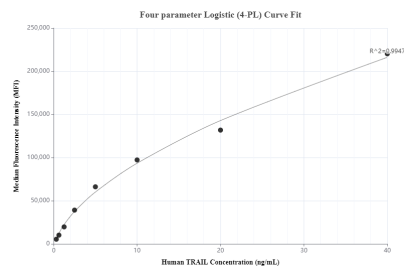
Saliva of six individual healthy human donors was measured. The human TRAIL concentration of detected samples was determined to be 809.9 pg/mL with a range of 159.6 - 1,340.0 pg/mL



Serum of six individual healthy human donors was measured. The human TRAIL concentration of detected samples was determined to be 182.8 pg/mL with a range of 33.7 - 368.3 pg/mL



Human peripheral blood mononuclear cells (PBMC) were cultured unstimulated or stimulated with 10 μ g/mL PHA for 3 days or 5 days. For the PBMC supernatant cultured for 3 days, the mean TRAIL concentration was undetectable in unstimulated PBMC supernatant, 22.3 pg/mL in PHA stimulated PBMC supernatant. For the PBMC supernatant cultured for 5 days, the mean TRAIL concentration was determined to be 1.0 pg/mL in unstimulated PBMC supernatant, 22.9



Cytometric bead array standard curve of MP01166-1, TRAIL Recombinant Matched Antibody Pair, PBS Only. Capture antibody: 84280-2-PBS. Detection antibody: 84280-1-PBS. Standard: RP02339. Range: 0.313-40 ng/mL