

CD69 Recombinant Matched Antibody Pair, PBS Only

Catalog Number: **MP01164-1**

Capture Antibody Information

Catalog Number:
84258-5-PBS
Host:
Rabbit
Isotype:
IgG
Purification Method:
Protein A purification

Clone ID:
241552F4
Reactivity:
human
GenBank:
NM_001781.2

Conjugate:
Unconjugated
Full name:
CD69 molecule
Gene ID:
969

Detection Antibody Information

Catalog Number:
84258-1-PBS
Host:
Rabbit
Isotype:
IgG
Purification Method:
Protein A purification

Clone ID:
241552D1
Reactivity:
human
GenBank:
NM_001781.2

Conjugate:
Unconjugated
Full name:
CD69 molecule
Gene ID:
969

Applications

Tested Applications:
Cytometric bead array, Sandwich ELISA

Range:
0.156-20 ng/mL (Cytometric Bead Array)
19.5-1250 pg/mL (Sandwich ELISA)

Recommended Dilutions:
It is recommended that this reagent should be titrated in each testing system to obtain optimal results.

Product Information

MP01164-1 targets CD69 in immunoassays as a matched antibody pair. Validated in Cytometric bead array, Sandwich ELISA.

Capture antibody: CD69 Recombinant antibody, PBS Only (Capture) 84258-5-PBS (241552F4). 100 µg. Concentration 1 mg/mL.

Detection antibody: CD69 Recombinant antibody, PBS Only (Detector) 84258-1-PBS (241552D1). 100 µg. Concentration 1 mg/mL.

Unconjugated rabbit recombinant monoclonal antibody pair in PBS only storage buffer at a concentration of 1 mg/mL, ready for conjugation. Created using Proteintech's proprietary in-house recombinant technology. Recombinant production enables unrivalled batch-to-batch consistency, easy scale-up, and future security of supply.

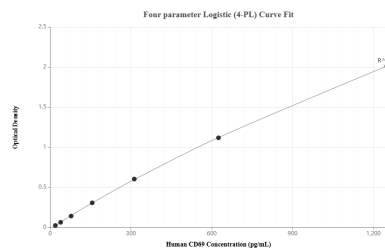
Matched antibody pairs are designed for use in a variety of assays and platforms that require matched antibody pairs.

Antibody use should be optimized for each application and assay.

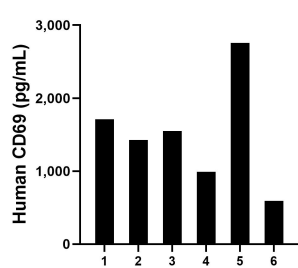
Storage

Storage:
Store at -80°C.
The product is shipped with ice packs. Upon receipt, store it immediately at -80°C
Storage buffer:
PBS only

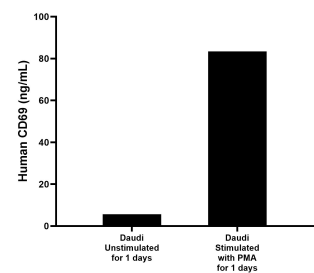
Selected Validation Data



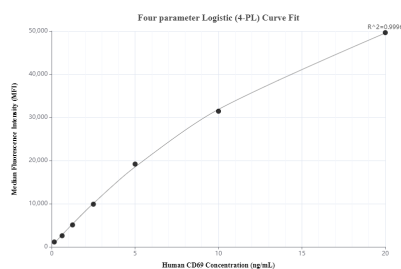
Sandwich ELISA standard curve of MP01164-1, Human CD69 Recombinant Matched Antibody Pair - PBS only. 84258-5-PBS was coated to a plate as the capture antibody and incubated with serial dilutions of standard Eg1791. 84258-1-PBS was HRP conjugated as the detection antibody. Range: 19.5-1250 pg/mL



Serum of six individual healthy human donors was measured. The human CD69 concentration of detected samples was determined to be 1,504.2 pg/mL with a range of 592.9 - 2,756.6 pg/mL



Daudi cells were cultured unstimulated or stimulated with 50 ng/mL PMA for 1 day. The mean CD69 concentration was determined to be 5.60 ng/mL in unstimulated Daudi cell extract based on a 2.7 mg/mL extract load and 83.4 ng/mL in stimulated Daudi cell extract based on a 3.1 mg/mL extract load.



Cytometric bead array standard curve of MP01164-1, CD69 Recombinant Matched Antibody Pair, PBS Only. Capture antibody: 84258-5-PBS. Detection antibody: 84258-1-PBS. Standard: Eg1791. Range: 0.156-20 ng/mL