

For Research Use Only

# CD39/ENTPD1 Recombinant Matched Antibody Pair, PBS Only



Catalog Number:MP01143-1

## Capture Antibody Information

**Catalog Number:**  
98102-1-PBS  
**Host:**  
Rabbit  
**Isotype:**  
IgG  
**Purification Method:**  
Protein A purification

**Clone ID:**  
241292G7  
**Reactivity:**  
human  
**GenBank:**  
BC047664

**Conjugate:**  
Unconjugated  
**Full name:**  
ectonucleoside triphosphate diphosphohydrolase 1  
**Gene ID:**  
953

## Detection Antibody Information

**Catalog Number:**  
84235-2-PBS  
**Host:**  
Rabbit  
**Isotype:**  
IgG  
**Purification Method:**  
Protein A purification

**Clone ID:**  
241293D3  
**Reactivity:**  
human  
**GenBank:**  
BC047664

**Conjugate:**  
Unconjugated  
**Full name:**  
ectonucleoside triphosphate diphosphohydrolase 1  
**Gene ID:**  
953

## Applications

**Tested Applications:**  
Cytometric bead array, Sandwich ELISA

**Range:**  
0.156-20 ng/mL (Cytometric Bead Array)  
19.5-1250 pg/mL (Sandwich ELISA)

**Recommended Dilutions:**  
It is recommended that this reagent should be titrated in each testing system to obtain optimal results.

## Product Information

MP01143-1 targets CD39/ENTPD1 in immunoassays as a matched antibody pair. Validated in Cytometric bead array, Sandwich ELISA.

Capture antibody: Anti-Human CD39/ENTPD1 Rabbit Recombinant Antibody, PBS Only 98102-1-PBS (241292G7). 100  $\mu$ g. Concentration 1 mg/mL.

Detection antibody: CD39/ENTPD1 Recombinant antibody, PBS Only (Detector) 84235-2-PBS (241293D3). 100  $\mu$ g. Concentration 1 mg/mL.

Alternative CD39/ENTPD1 matched antibody pairs: MP01143-2, MP01143-3

Unconjugated rabbit recombinant monoclonal antibody pair in PBS only storage buffer at a concentration of 1 mg/mL, ready for conjugation. Created using Proteintech's proprietary in-house recombinant technology. Recombinant production enables unrivalled batch-to-batch consistency, easy scale-up, and future security of supply.

Matched antibody pairs are designed for use in a variety of assays and platforms that require matched antibody pairs.

Antibody use should be optimized for each application and assay.

## Storage

**Storage:**  
Store at -80°C.  
**The product is shipped with ice packs. Upon receipt, store it immediately at -80°C**  
**Storage buffer:**  
PBS only

For technical support and original validation data for this product please contact:

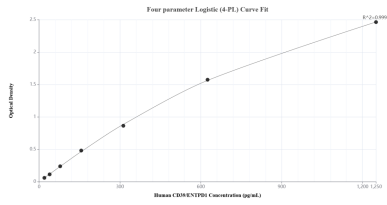
T: 4006900926

E: [Proteintech-CN@ptglab.com](mailto:Proteintech-CN@ptglab.com)

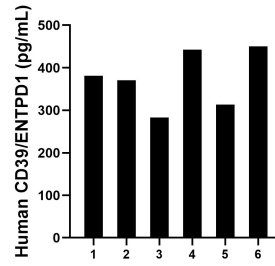
W: [ptgcn.com](http://ptgcn.com)

**This product is exclusively available under Proteintech Group brand and is not available to purchase from any other manufacturer.**

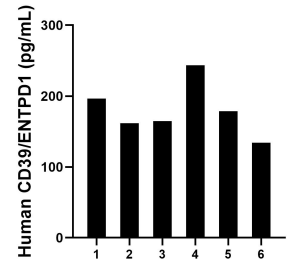
## Selected Validation Data



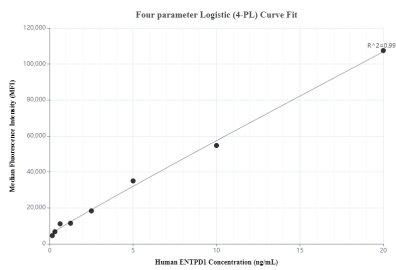
Sandwich ELISA standard curve of MP01143-1, Human CD39/ENTPD1 Recombinant Matched Antibody Pair - PBS only. 98102-1-PBS was coated to a plate as the capture antibody and incubated with serial dilutions of standard RP02313. 84235-2-PBS was HRP conjugated as the detection antibody. Range: 19.5-1250 pg/mL



Serum of six individual healthy human donors was measured. The CD39/ENTPD1 concentration of detected samples was determined to be 373.5 pg/mL with a range of 283.0-450.4 pg/mL.



Plasma of six individual healthy human donors was measured. The CD39/ENTPD1 concentration of detected samples was determined to be 179.9 pg/mL with a range of 134.2-243.6 ng/mL.



Cytometric bead array standard curve of MP01143-1, ENTPD1/CD39 Recombinant Matched Antibody Pair, PBS Only. Capture antibody: 98102-1-PBS. Detection antibody: 84235-2-PBS. Standard: RP02313. Range: 0.156-20 ng/mL