

Carbonic Anhydrase IX/CA9 Recombinant Matched Antibody Pair, PBS Only

Catalog Number: **MP01136-1**

Capture Antibody Information

| | | |
|--|--------------------------------------|-------------------------------------|
| Catalog Number: 84233-3-PBS | Clone ID: 241573G5 | Conjugate: Unconjugated |
| Host: Rabbit | Reactivity: human | Full name: carbonic anhydrase IX |
| Isotype: IgG | GenBank: BC014950 | Gene ID: 768 |
| Purification Method: Protein A purification | Immunogen Catalog Number: Ag36941 | |

Detection Antibody Information

| | | |
|--|--------------------------------------|-------------------------------------|
| Catalog Number: 84233-5-PBS | Clone ID: 241573G11 | Conjugate: Unconjugated |
| Host: Rabbit | Reactivity: human | Full name: carbonic anhydrase IX |
| Isotype: IgG | GenBank: BC014950 | Gene ID: 768 |
| Purification Method: Protein A purification | Immunogen Catalog Number: Ag36941 | |

Applications

| | | |
|--|---|--|
| Tested Applications: Cytometric bead array, Sandwich ELISA | Range: 0.313-20 ng/mL (Cytometric Bead Array) 15.6-1000 pg/mL (Sandwich ELISA) | Recommended Dilutions: It is recommended that this reagent should be titrated in each testing system to obtain optimal results. |
|--|---|--|

Product Information

MP01136-1 targets Carbonic Anhydrase IX/CA9 in immunoassays as a matched antibody pair. Validated in Cytometric bead array, Sandwich ELISA.

Capture antibody: CA9 Recombinant antibody, PBS Only (Capture) 84233-3-PBS (241573G5). 100 µg. Concentration 1 mg/mL.

Detection antibody: CA9 Recombinant antibody, PBS Only (Detector) 84233-5-PBS (241573G11). 100 µg. Concentration 1 mg/mL.

Unconjugated rabbit recombinant monoclonal antibody pair in PBS only storage buffer at a concentration of 1 mg/mL, ready for conjugation. Created using Proteintech's proprietary in-house recombinant technology. Recombinant production enables unrivalled batch-to-batch consistency, easy scale-up, and future security of supply.

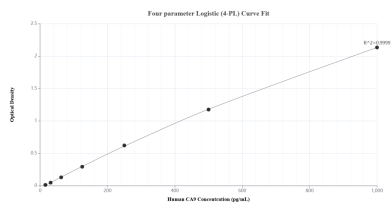
Matched antibody pairs are designed for use in a variety of assays and platforms that require matched antibody pairs.

Antibody use should be optimized for each application and assay.

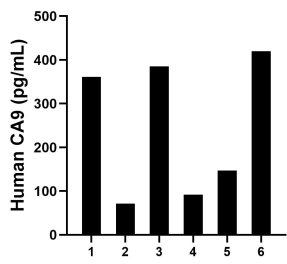
Storage

Storage:
Store at -80°C.
The product is shipped with ice packs. Upon receipt, store it immediately at -80°C
Storage buffer:
PBS only

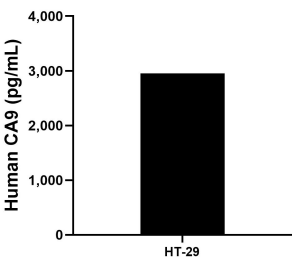
Selected Validation Data



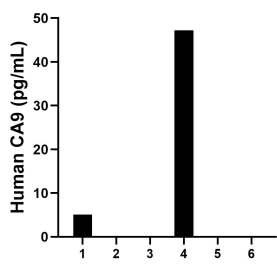
Sandwich ELISA standard curve of MP01136-1, Human CA9 Recombinant Matched Antibody Pair - PBS only. 84233-3-PBS was coated to a plate as the capture antibody and incubated with serial dilutions of standard Ag36941. 84233-5-PBS was HRP conjugated as the detection antibody. Range: 15.6-1000 pg/mL.



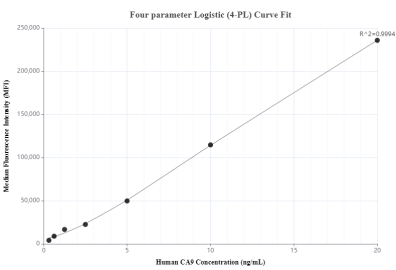
Serum of six individual healthy human donors was measured. The CA9 concentration of detected samples was determined to be 246.1 pg/mL with a range of 71.5-420.1 pg/mL.



HT-29 were cultured in DMEM supplemented with 10% fetal bovine serum, 2.5 mM L-glutamine, 100 U/mL penicillin, and 100 µg/mL streptomycin sulfate. An aliquot of the cell culture supernate was removed, assayed for human CA9, and measured 2,951.1 pg/mL.



Urine of six individual healthy human donors was measured. Five measured less than the lowest human CA9 standard, 15.6 pg/mL. One sample read 47.2 pg/mL.



Cytometric bead array standard curve of MP01136-1, CA9 Recombinant Matched Antibody Pair, PBS Only. Capture antibody: 84233-3-PBS. Detection antibody: 84233-5-PBS. Standard: Ag36941. Range: 0.313-20 ng/mL.