

# CD84 Recombinant Matched Antibody Pair, PBS Only

Catalog Number: **MP01112-2**

## Capture Antibody Information

**Catalog Number:**

84245-1-PBS

**Host:**

Rabbit

**Isotype:**

IgG

**Purification Method:**

Protein A purification

**Clone ID:**

241342A10

**Reactivity:**

human

**GenBank:**

BC020063

**Conjugate:**

Unconjugated

**Full name:**

CD84 molecule

**Gene ID:**

8832

## Detection Antibody Information

**Catalog Number:**

98108-1-PBS

**Host:**

Rabbit

**Isotype:**

IgG

**Purification Method:**

Protein A purification

**Clone ID:**

241345A3

**Reactivity:**

human

**GenBank:**

BC020063

**Conjugate:**

Unconjugated

**Full name:**

CD84 molecule

**Gene ID:**

8832

## Applications

**Tested Applications:**

Cytometric bead array, Sandwich ELISA

**Range:**

0.313-40 ng/mL (Cytometric Bead Array)  
0.156-10 ng/mL (Sandwich ELISA)

**Recommended Dilutions:**

It is recommended that this reagent should be titrated in each testing system to obtain optimal results.

## Product Information

MP01112-2 targets CD84 in immunoassays as a matched antibody pair. Validated in Cytometric bead array, Sandwich ELISA.

Capture antibody: CD84 Recombinant antibody, PBS Only (Capture) 84245-1-PBS (241342A10). 100 µg. Concentration 1 mg/mL.

Detection antibody: Anti-Human CD84 Rabbit Recombinant Antibody, PBS Only 98108-1-PBS (241345A3). 100 µg. Concentration 1 mg/mL.

Unconjugated rabbit recombinant monoclonal antibody pair in PBS only storage buffer at a concentration of 1 mg/mL, ready for conjugation. Created using Proteintech's proprietary in-house recombinant technology. Recombinant production enables unrivalled batch-to-batch consistency, easy scale-up, and future security of supply.

Matched antibody pairs are designed for use in a variety of assays and platforms that require matched antibody pairs.

Antibody use should be optimized for each application and assay.

## Storage

**Storage:**

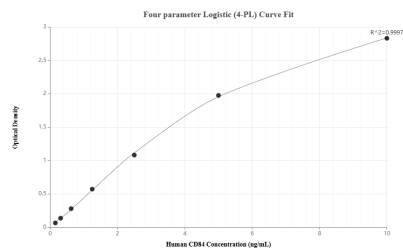
Store at -80°C.

The product is shipped with ice packs. Upon receipt, store it immediately at -80°C

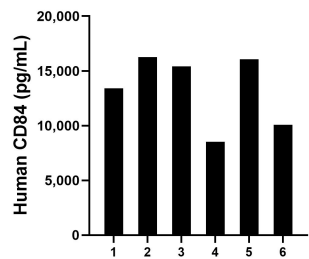
**Storage buffer:**

PBS only

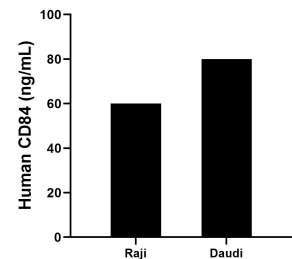
## Selected Validation Data



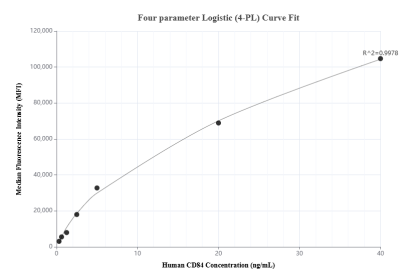
Sandwich ELISA standard curve of MP01112-2, Human CD84 Recombinant Matched Antibody Pair - PBS only. 84245-1-PBS was coated to a plate as the capture antibody and incubated with serial dilutions of standard RP02347. 98108-1-PBS was HRP conjugated as the detection antibody. Range: 0.156-10 ng/mL



Serum of six individual healthy human donors was measured. The human CD84 concentration of detected samples was determined to be 13,292.9 pg/mL with a range of 8,538.9 - 16,254.6 pg/mL.



The mean CD84 concentration was determined to be 59.65 ng/mL in Raji cell extract based on a 1.0 mg/mL extract load and 79.95 ng/mL in Daudi cell extract based on a 1.8 mg/mL extract load.



Cytometric bead array standard curve of MP01112-2, CD84 Recombinant Matched Antibody Pair, PBS Only. Capture antibody: 84245-1-PBS. Detection antibody: 98108-1-PBS. Standard: RP02347. Range: 0.313-40 ng/mL