

C19orf33 Recombinant Matched Antibody Pair, PBS Only

Catalog Number:MP01103-3

Capture Antibody Information

Catalog Number:
84148-4-PBS
Host:
Rabbit
Isotype:
IgG
Purification Method:
Protein A purification

Clone ID:
241220D10
Reactivity:
human
GenBank:
BC060319
Immunogen Catalog Number:
Ag22218

Conjugate:
Unconjugated
Full name:
chromosome 19 open reading frame 33
Gene ID:
64073

Detection Antibody Information

Catalog Number:
84148-1-PBS
Host:
Rabbit
Isotype:
IgG
Purification Method:
Protein A purification

Clone ID:
241220C2
Reactivity:
human
GenBank:
BC060319
Immunogen Catalog Number:
Ag22218

Conjugate:
Unconjugated
Full name:
chromosome 19 open reading frame 33
Gene ID:
64073

Applications

Tested Applications:
Cytometric bead array

Range:
0.313-40 ng/mL (Cytometric Bead Array)

Recommended Dilutions:
It is recommended that this reagent should be titrated in each testing system to obtain optimal results.

Product Information

MP01103-3 targets C19orf33 in immunoassays as a matched antibody pair. Validated in Cytometric bead array.

Capture antibody: C19orf33 Recombinant antibody, PBS Only (Capture) 84148-4-PBS (241220D10). 100 µg. Concentration 1 mg/ml.

Detection antibody: C19orf33 Recombinant antibody, PBS Only (Detector) 84148-1-PBS (241220C2). 100 µg. Concentration 1 mg/ml.

Alternative C19orf33 matched antibody pairs: MP01103-1, MP01103-2

Unconjugated rabbit recombinant monoclonal antibody pair in PBS only storage buffer at a concentration of 1 mg/mL, ready for conjugation. Created using Proteintech's proprietary in-house recombinant technology. Recombinant production enables unrivalled batch-to-batch consistency, easy scale-up, and future security of supply.

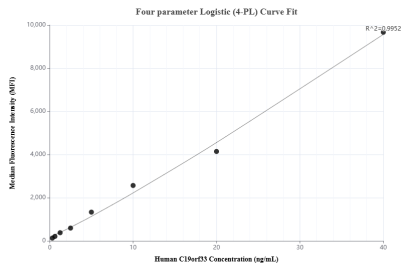
Matched antibody pairs are designed for use in a variety of assays and platforms that require matched antibody pairs.

Antibody use should be optimized for each application and assay.

Storage

Storage:
Store at -80°C.
The product is shipped with ice packs. Upon receipt, store it immediately at -80°C
Storage buffer:
PBS only

Selected Validation Data



Cytometric bead array standard curve of MP01103-3, C19orf33 Recombinant Matched Antibody Pair, PBS Only. Capture antibody: 84148-4-PBS. Detection antibody: 84148-1-PBS. Standard: Ag22218. Range: 0.313-40 ng/mL.