

# PRKAG2 Recombinant Matched Antibody Pair, PBS Only

Catalog Number: MP01102-2

## Capture Antibody Information

**Catalog Number:**  
84169-6-PBS  
**Host:**  
Rabbit  
**Isotype:**  
IgG  
**Purification Method:**  
Protein A purification

**Clone ID:**  
260578G8  
**Reactivity:**  
human  
**GenBank:**  
BC020540  
**Immunogen Catalog Number:**  
Ag3214

**Conjugate:**  
Unconjugated  
**Full name:**  
protein kinase, AMP-activated,  
gamma 2 non-catalytic subunit  
**Gene ID:**  
51422

## Detection Antibody Information

**Catalog Number:**  
84169-5-PBS  
**Host:**  
Rabbit  
**Isotype:**  
IgG  
**Purification Method:**  
Protein A purification

**Clone ID:**  
260578C10  
**Reactivity:**  
human  
**GenBank:**  
BC020540  
**Immunogen Catalog Number:**  
Ag3214

**Conjugate:**  
Unconjugated  
**Full name:**  
protein kinase, AMP-activated,  
gamma 2 non-catalytic subunit  
**Gene ID:**  
51422

## Applications

**Tested Applications:**  
Cytometric bead array

**Range:**  
0.625-80 ng/mL (Cytometric Bead Array)

**Recommended Dilutions:**  
It is recommended that this reagent should be titrated in each testing system to obtain optimal results.

## Product Information

MP01102-2 targets PRKAG2 in immunoassays as a matched antibody pair. Validated in Cytometric bead array.

Capture antibody: PRKAG2 Recombinant monoclonal antibody, PBS Only (Capture) 84169-6-PBS (260578G8). 100 µg. Concentration 1 mg/mL.

Detection antibody: PRKAG2 Recombinant monoclonal antibody, PBS Only (Detector) 84169-5-PBS (260578C10). 100 µg. Concentration 1 mg/mL.

Unconjugated rabbit recombinant monoclonal antibody pair in PBS only storage buffer at a concentration of 1 mg/mL, ready for conjugation. Created using Proteintech's proprietary in-house recombinant technology. Recombinant production enables unrivalled batch-to-batch consistency, easy scale-up, and future security of supply.

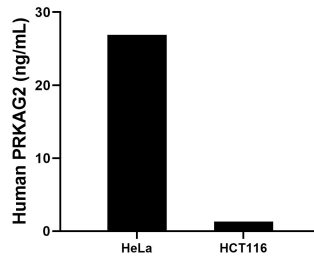
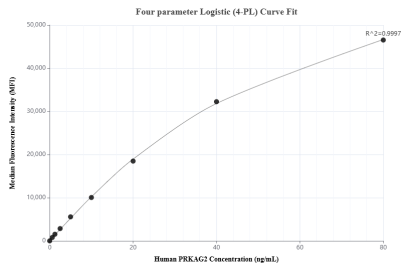
Matched antibody pairs are designed for use in a variety of assays and platforms that require matched antibody pairs.

Antibody use should be optimized for each application and assay.

## Storage

**Storage:**  
Store at -80°C.  
**The product is shipped with ice packs. Upon receipt, store it immediately at -80°C**  
**Storage buffer:**  
PBS only

## Selected Validation Data



Cytometric bead array standard curve of MP01102-2, PRKAG2 Recombinant Matched Antibody Pair, PBS Only. Capture antibody: 84169-6-PBS. Detection antibody: 84169-5-PBS. Standard: Ag3214. Range: 0.625-80 ng/mL

The mean PRKAG2 concentration was determined to be 26.9 ng/mL in HeLa cell extract based on a 1.0 mg/mL extract load, 1.3 ng/mL in HCT116 cell extract based on a 1.0 mg/mL extract load.