

GPNMB Recombinant Matched Antibody Pair, PBS Only

Catalog Number: **MP01096-1**

Capture Antibody Information

Catalog Number:
84160-3-PBS

Host:
Rabbit

Isotype:
IgG

Purification Method:
Protein A purification

Clone ID:
241435F3

Reactivity:
human

GenBank:
BC011595

Immunogen Catalog Number:
Ag14124

Conjugate:
Unconjugated

Full name:
glycoprotein (transmembrane) nmb

Gene ID:
10457

Detection Antibody Information

Catalog Number:
84160-2-PBS

Host:
Rabbit

Isotype:
IgG

Purification Method:
Protein A purification

Clone ID:
241435D10

Reactivity:
human

GenBank:
BC011595

Immunogen Catalog Number:
Ag14124

Conjugate:
Unconjugated

Full name:
glycoprotein (transmembrane) nmb

Gene ID:
10457

Applications

Tested Applications:
Cytometric bead array, Sandwich ELISA

Range:
0.781-100 ng/mL (Cytometric Bead Array)
0.781-50 ng/mL (Sandwich ELISA)

Recommended Dilutions:
It is recommended that this reagent should be titrated in each testing system to obtain optimal results.

Product Information

MP01096-1 targets GPNMB in immunoassays as a matched antibody pair. Validated in Cytometric bead array, Sandwich ELISA.

Capture antibody: GPNMB Recombinant antibody, PBS Only (Capture) 84160-3-PBS (241435F3). 100 µg. Concentration 1 mg/mL.

Detection antibody: GPNMB Recombinant antibody, PBS Only (Detector) 84160-2-PBS (241435D10). 100 µg. Concentration 1 mg/mL.

Unconjugated rabbit recombinant monoclonal antibody pair in PBS only storage buffer at a concentration of 1 mg/mL, ready for conjugation. Created using Proteintech's proprietary in-house recombinant technology. Recombinant production enables unrivalled batch-to-batch consistency, easy scale-up, and future security of supply.

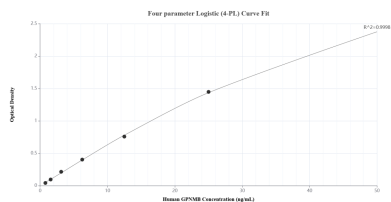
Matched antibody pairs are designed for use in a variety of assays and platforms that require matched antibody pairs.

Antibody use should be optimized for each application and assay.

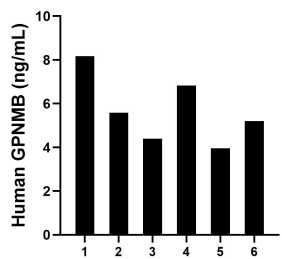
Storage

Storage:
Store at -80°C.
The product is shipped with ice packs. Upon receipt, store it immediately at -80°C
Storage buffer:
PBS only

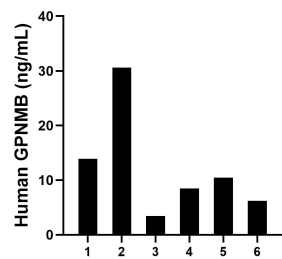
Selected Validation Data



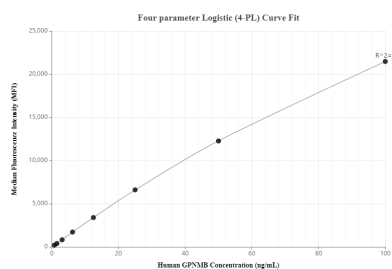
Sandwich ELISA standard curve of MP01096-1, Human GPNMB Recombinant Matched Antibody Pair - PBS only. 84160-3-PBS was coated to a plate as the capture antibody and incubated with serial dilutions of standard Ag14124. 84160-2-PBS was HRP conjugated as the detection antibody. Range: 0.781-50 ng/mL.



Serum of six individual healthy human donors was measured. The GPNMB concentration of detected samples was determined to be 5.69 ng/mL with a range of 3.96-8.17 ng/mL.



Plasma of six individual healthy human donors was measured. The GPNMB concentration of detected samples was determined to be 12.18 ng/mL with a range of 3.43-30.61 ng/mL.



Cytometric bead array standard curve of MP01096-1, GPNMB Recombinant Matched Antibody Pair, PBS Only. Capture antibody: 84160-3-PBS. Detection antibody: 84160-2-PBS. Standard: Ag14124. Range: 0.781-100 ng/mL.