

# MED6 Recombinant Matched Antibody Pair, PBS Only

Catalog Number: **MP01087-3**

## Capture Antibody Information

<b>Catalog Number:</b> 84184-4-PBS	<b>Clone ID:</b> 241382H2	<b>Conjugate:</b> Unconjugated
<b>Host:</b> Rabbit	<b>Reactivity:</b> human, mouse	<b>Full name:</b> mediator complex subunit 6
<b>Isotype:</b> IgG	<b>GenBank:</b> BC004106	<b>Gene ID:</b> 10001
<b>Purification Method:</b> Protein A purification	<b>Immunogen Catalog Number:</b> Ag7541	

## Detection Antibody Information

<b>Catalog Number:</b> 84184-2-PBS	<b>Clone ID:</b> 241382E3	<b>Conjugate:</b> Unconjugated
<b>Host:</b> Rabbit	<b>Reactivity:</b> human	<b>Full name:</b> mediator complex subunit 6
<b>Isotype:</b> IgG	<b>GenBank:</b> BC004106	<b>Gene ID:</b> 10001
<b>Purification Method:</b> Protein A purification	<b>Immunogen Catalog Number:</b> Ag7541	

## Applications

<b>Tested Applications:</b> Cytometric bead array, Sandwich ELISA	<b>Range:</b> 0.781-100 ng/mL (Cytometric Bead Array) 156-5000 pg/mL (Sandwich ELISA)	<b>Recommended Dilutions:</b> It is recommended that this reagent should be titrated in each testing system to obtain optimal results.
----------------------------------------------------------------------	---------------------------------------------------------------------------------------------	-------------------------------------------------------------------------------------------------------------------------------------------

## Product Information

MP01087-3 targets MED6 in immunoassays as a matched antibody pair. Validated in Cytometric bead array, Sandwich ELISA.

Capture antibody: MED6 Recombinant antibody, PBS Only (Capture) 84184-4-PBS (241382H2). 100 µg. Concentration 1 mg/mL.

Detection antibody: MED6 Recombinant antibody, PBS Only (Detector) 84184-2-PBS (241382E3). 100 µg. Concentration 1 mg/mL.

Alternative MED6 matched antibody pairs: MP01087-1, MP01087-2

Unconjugated rabbit recombinant monoclonal antibody pair in PBS only storage buffer at a concentration of 1 mg/mL, ready for conjugation. Created using Proteintech's proprietary in-house recombinant technology. Recombinant production enables unrivalled batch-to-batch consistency, easy scale-up, and future security of supply.

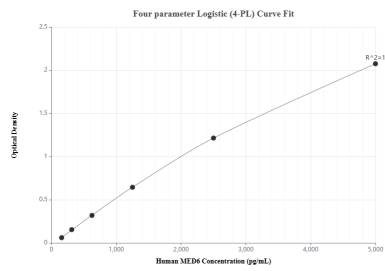
Matched antibody pairs are designed for use in a variety of assays and platforms that require matched antibody pairs.

Antibody use should be optimized for each application and assay.

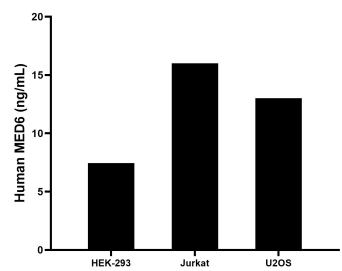
## Storage

**Storage:**  
Store at -80°C.  
**The product is shipped with ice packs. Upon receipt, store it immediately at -80°C**  
**Storage buffer:**  
PBS only

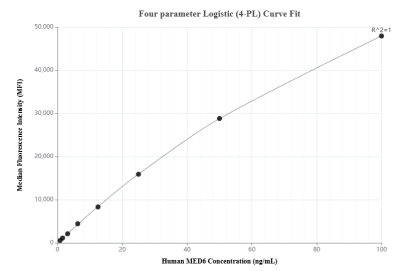
## Selected Validation Data



Sandwich ELISA standard curve of MP01087-3, Human MED6 Recombinant Matched Antibody Pair - PBS only. 84184-4-PBS was coated to a plate as the capture antibody and incubated with serial dilutions of standard Ag7541. 84184-2-PBS was HRP conjugated as the detection antibody. Range: 156-5000 pg/mL



The mean MED6 concentration was determined to be 7.45 ng/mL in HEK-293 cell extract based on a 1.5 mg/mL extract load, 16.00 ng/mL in Jurkat cell extract based on a 1.5 mg/mL extract load and 13.01 ng/mL in U2OS cell extract based on a 3.1 mg/mL extract load.



Cytometric bead array standard curve of MP01087-3, MED6 Recombinant Matched Antibody Pair, PBS Only. Capture antibody: 84184-4-PBS. Detection antibody: 84184-2-PBS. Standard: Ag7541. Range: 0.781-100 ng/mL