

For Research Use Only

Ki-67 Recombinant Matched Antibody Pair, PBS Only



Catalog Number:MP01085-2

Capture Antibody Information

Catalog Number:
84192-10-PBS
Host:
Rabbit
Isotype:
IgG
Purification Method:
Protein A purification

Clone ID:
241499G10
Reactivity:
human
GenBank:
NM_002417

Conjugate:
Unconjugated
Full name:
antigen identified by monoclonal antibody Ki-67
Gene ID:
4288

Detection Antibody Information

Catalog Number:
84192-9-PBS
Host:
Rabbit
Isotype:
IgG
Purification Method:
Protein A purification

Clone ID:
241499A3
Reactivity:
human
GenBank:
NM_002417

Conjugate:
Unconjugated
Full name:
antigen identified by monoclonal antibody Ki-67
Gene ID:
4288

Applications

Tested Applications:
Sandwich ELISA

Range:
0.625-40 ng/mL (Sandwich ELISA)

Recommended Dilutions:
It is recommended that this reagent should be titrated in each testing system to obtain optimal results.

Product Information

MP01085-2 targets Ki-67 in immunoassays as a matched antibody pair. Validated in Sandwich ELISA.

Capture antibody: KI67 Recombinant monoclonal antibody, PBS Only (Capture) 84192-10-PBS (241499G10). 100 µg. Concentration 1 mg/mL.

Detection antibody: KI67 Recombinant monoclonal antibody, PBS Only (Detector) 84192-9-PBS (241499A3). 100 µg. Concentration 1 mg/mL.

Unconjugated rabbit recombinant monoclonal antibody pair in PBS only storage buffer at a concentration of 1 mg/mL, ready for conjugation. Created using Proteintech's proprietary in-house recombinant technology. Recombinant production enables unrivalled batch-to-batch consistency, easy scale-up, and future security of supply.

Matched antibody pairs are designed for use in a variety of assays and platforms that require matched antibody pairs.

Antibody use should be optimized for each application and assay.

Storage

Storage:
Store at -80°C.
The product is shipped with ice packs. Upon receipt, store it immediately at -80°C
Storage buffer:
PBS only

For technical support and original validation data for this product please contact:

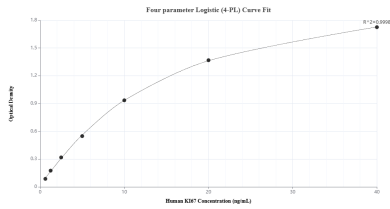
T: 4006900926

E: Proteintech-CN@ptglab.com

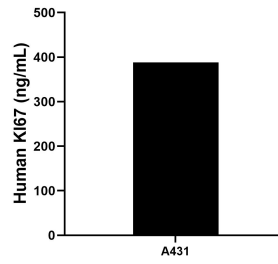
W: ptgcn.com

This product is exclusively available under Proteintech Group brand and is not available to purchase from any other manufacturer.

Selected Validation Data



Sandwich ELISA standard curve of MP01085-2, Human Ki-67 Recombinant Matched Antibody Pair - PBS only. 84192-10-PBS was coated to a plate as the capture antibody and incubated with serial dilutions of standard SY02291. 84192-9-PBS was HRP conjugated as the detection antibody. Range: 0.625-40 ng/mL



The mean Ki-67 concentration was determined to be 388.00 ng/mL in A431 cell extract based on a 1.2 mg/mL extract load.