

# UCH-L1/PGP9.5 Recombinant Matched Antibody Pair, PBS Only

Catalog Number: **MP01079-2**

## Capture Antibody Information

**Catalog Number:**  
84154-2-PBS

**Host:**  
Rabbit

**Isotype:**  
IgG

**Purification Method:**  
Protein A purification

**Clone ID:**  
241107C5

**Reactivity:**  
human

**GenBank:**  
BC000332

**Immunogen Catalog Number:**  
Ag6490

**Conjugate:**  
Unconjugated

**Full name:**  
ubiquitin carboxyl-terminal esterase L1 (ubiquitin thiolesterase)

**Gene ID:**  
7345

## Detection Antibody Information

**Catalog Number:**  
84154-3-PBS

**Host:**  
Rabbit

**Isotype:**  
IgG

**Purification Method:**  
Protein A purification

**Clone ID:**  
241107G1

**Reactivity:**  
human

**GenBank:**  
BC000332

**Immunogen Catalog Number:**  
Ag6490

**Conjugate:**  
Unconjugated

**Full name:**  
ubiquitin carboxyl-terminal esterase L1 (ubiquitin thiolesterase)

**Gene ID:**  
7345

## Applications

**Tested Applications:**  
Cytometric bead array, Sandwich ELISA

**Range:**  
0.781-100 ng/mL (Cytometric Bead Array)  
0.625-20 ng/mL (Sandwich ELISA)

**Recommended Dilutions:**  
It is recommended that this reagent should be titrated in each testing system to obtain optimal results.

## Product Information

MP01079-2 targets UCH-L1/PGP9.5 in immunoassays as a matched antibody pair. Validated in Cytometric bead array, Sandwich ELISA.

Capture antibody: UCH-L1/PGP9.5 Recombinant antibody, PBS Only (Capture) 84154-2-PBS (241107C5). 100 µg. Concentration 1 mg/mL.

Detection antibody: UCH-L1/PGP9.5 Recombinant antibody, PBS Only (Capture/Detector) 84154-3-PBS (241107G1). 100 µg. Concentration 1 mg/mL.

Unconjugated rabbit recombinant monoclonal antibody pair in PBS only storage buffer at a concentration of 1 mg/mL, ready for conjugation. Created using Proteintech's proprietary in-house recombinant technology. Recombinant production enables unrivalled batch-to-batch consistency, easy scale-up, and future security of supply.

Matched antibody pairs are designed for use in a variety of assays and platforms that require matched antibody pairs.

Antibody use should be optimized for each application and assay.

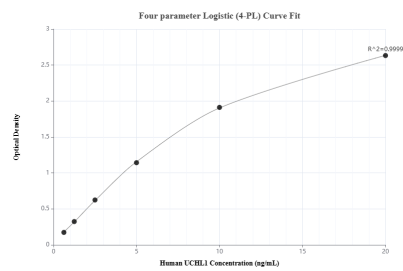
## Storage

**Storage:**  
Store at -80°C.

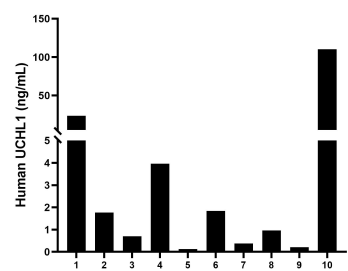
**The product is shipped with ice packs. Upon receipt, store it immediately at -80°C**

**Storage buffer:**  
PBS only

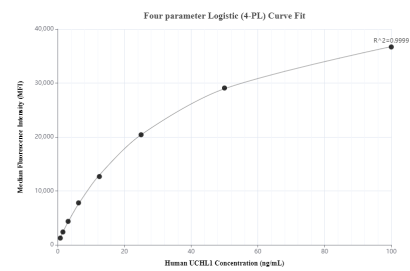
## Selected Validation Data



Sandwich ELISA standard curve of MP01079-2, Human UCH-L1/PGP9.5 Recombinant Matched Antibody Pair - PBS only. 84154-2-PBS was coated to a plate as the capture antibody and incubated with serial dilutions of standard Ag6490. 84154-3-PBS was HRP conjugated as the detection antibody. Range: 0.625-20 ng/mL



Serum of ten individual healthy human donors was measured. The human UCH-L1/PGP9.5 concentration of detected samples was determined to be 8.99 ng/mL with a range of 0.13 - 110.20 ng/mL



Cytometric bead array standard curve of MP01079-2, UCH-L1/PGP9.5 Recombinant Matched Antibody Pair, PBS Only. Capture antibody: 84154-2-PBS. Detection antibody: 84154-3-PBS. Standard: Ag6490. Range: 0.781-100 ng/mL