

# IL-13 Recombinant Matched Antibody Pair, PBS Only

Catalog Number: **MP01078-3**

## Capture Antibody Information

**Catalog Number:**

84158-5-PBS

**Host:**

Rabbit

**Isotype:**

IgG

**Purification Method:**

Protein A purification

**Clone ID:**

241396H6

**Reactivity:**

human

**GenBank:**

AAK53823

**Conjugate:**

Unconjugated

**Full name:**

interleukin 13

**Gene ID:**

3596

## Detection Antibody Information

**Catalog Number:**

84158-3-PBS

**Host:**

Rabbit

**Isotype:**

IgG

**Purification Method:**

Protein A purification

**Clone ID:**

241396E12

**Reactivity:**

human

**GenBank:**

AAK53823

**Conjugate:**

Unconjugated

**Full name:**

interleukin 13

**Gene ID:**

3596

## Applications

**Tested Applications:**

Sandwich ELISA

**Range:**

62.5-4000 pg/mL (Sandwich ELISA)

**Recommended Dilutions:**

It is recommended that this reagent should be titrated in each testing system to obtain optimal results.

## Product Information

MP01078-3 targets IL-13 in immunoassays as a matched antibody pair. Validated in Sandwich ELISA.

Capture antibody: IL13 Recombinant antibody, PBS Only (Capture) 84158-5-PBS (241396H6). 100  $\mu$ g. Concentration 1 mg/mL.

Detection antibody: IL-13 Recombinant antibody, PBS Only (Detector) 84158-3-PBS (241396E12). 100  $\mu$ g. Concentration 1 mg/mL.

Unconjugated rabbit recombinant monoclonal antibody pair in PBS only storage buffer at a concentration of 1 mg/mL, ready for conjugation. Created using Proteintech's proprietary in-house recombinant technology. Recombinant production enables unrivalled batch-to-batch consistency, easy scale-up, and future security of supply.

Matched antibody pairs are designed for use in a variety of assays and platforms that require matched antibody pairs.

Antibody use should be optimized for each application and assay.

## Storage

**Storage:**

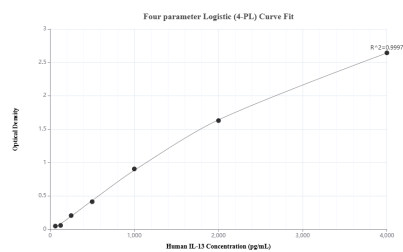
Store at -80°C.

**The product is shipped with ice packs. Upon receipt, store it immediately at -80°C**

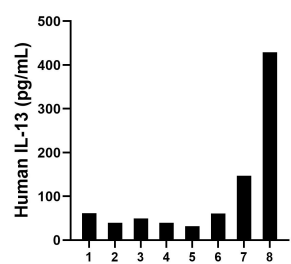
**Storage buffer:**

PBS only

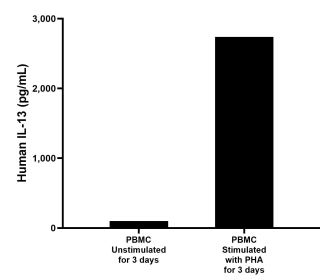
## Selected Validation Data



Sandwich ELISA standard curve of MP01078-3, Human IL-13 Recombinant Matched Antibody Pair - PBS only. 84158-5-PBS was coated to a plate as the capture antibody and incubated with serial dilutions of standard Eg0061. 84158-3-PBS was HRP conjugated as the detection antibody. Range: 62.5-4000 pg/mL



Serum of eight individual healthy human donors was measured. The human IL-13 concentration of detected samples was determined to be 50.3 pg/mL with a range of 31.9 - 429.1 pg/mL



Human peripheral blood mononuclear cells (PBMC) were cultured unstimulated or stimulated with 10  $\mu$ g/mL PHA for 3 days. The mean IL-13 concentration was determined to be 101.1 pg/mL in unstimulated PBMC supernatant, 2,738.4 pg/mL in PHA stimulated PBMC supernatant.