

# COX-1/Cyclooxygenase-1

## Recombinant Matched Antibody Pair,

### PBS Only

Catalog Number: **MP01068-4**

#### Capture Antibody Information

**Catalog Number:**  
84151-5-PBS

**Host:**  
Rabbit

**Isotype:**  
IgG

**Purification Method:**  
Protein A purification

**Clone ID:**  
241373F11

**Reactivity:**  
human

**GenBank:**  
BC029840

**Immunogen Catalog Number:**  
Ag4055

**Conjugate:**  
Unconjugated

**Full name:**  
prostaglandin-endoperoxide synthase 1 (prostaglandin G/H synthase and cyclooxygenase)

**Gene ID:**  
5742

#### Detection Antibody Information

**Catalog Number:**  
84151-2-PBS

**Host:**  
Rabbit

**Isotype:**  
IgG

**Purification Method:**  
Protein A purification

**Clone ID:**  
241373B7

**Reactivity:**  
human

**GenBank:**  
BC029840

**Immunogen Catalog Number:**  
Ag4055

**Conjugate:**  
Unconjugated

**Full name:**  
prostaglandin-endoperoxide synthase 1 (prostaglandin G/H synthase and cyclooxygenase)

**Gene ID:**  
5742

#### Applications

**Tested Applications:**  
Sandwich ELISA

**Range:**  
1.56-50 ng/mL (Sandwich ELISA)

**Recommended Dilutions:**  
It is recommended that this reagent should be titrated in each testing system to obtain optimal results.

#### Product Information

MP01068-4 targets COX-1/Cyclooxygenase-1 in immunoassays as a matched antibody pair. Validated in Sandwich ELISA.

Capture antibody: PTGS1 Recombinant antibody, PBS Only (Capture) 84151-5-PBS (241373F11). 100 µg. Concentration 1 mg/mL.

Detection antibody: COX-1/Cyclooxygenase-1 Recombinant antibody, PBS Only (Capture/Detector) 84151-2-PBS (241373B7). 100 µg. Concentration 1 mg/mL.

Unconjugated rabbit recombinant monoclonal antibody pair in PBS only storage buffer at a concentration of 1 mg/mL, ready for conjugation. Created using Proteintech's proprietary in-house recombinant technology. Recombinant production enables unrivalled batch-to-batch consistency, easy scale-up, and future security of supply.

Matched antibody pairs are designed for use in a variety of assays and platforms that require matched antibody pairs.

Antibody use should be optimized for each application and assay.

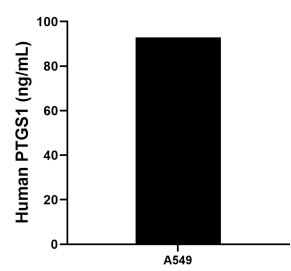
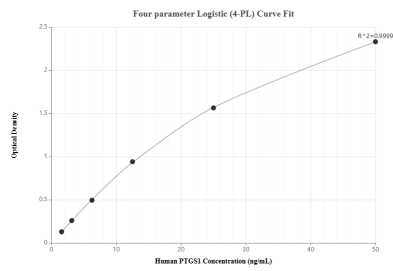
#### Storage

**Storage:**  
Store at -80°C.

**The product is shipped with ice packs. Upon receipt, store it immediately at -80°C**

**Storage buffer:**  
PBS only

## Selected Validation Data



Sandwich ELISA standard curve of MP01068-4, Human COX-1/Cyclooxygenase-1 Recombinant Matched Antibody Pair - PBS only. 84151-5-PBS was coated to a plate as the capture antibody and incubated with serial dilutions of standard Ag4055. 84151-2-PBS was HRP conjugated as the detection antibody. Range: 1.56-50 ng/mL

The mean COX-1/Cyclooxygenase-1 concentration was determined to be 92.92 ng/mL in A549 cell extract based on a 2.5 mg/mL extract load.