

ARHGEF11 Recombinant Matched Antibody Pair, PBS Only

Catalog Number: **MP01063-2**

Capture Antibody Information

Catalog Number:
84149-3-PBS
Host:
Rabbit
Isotype:
IgG
Purification Method:
Protein A purification

Clone ID:
241427D6
Reactivity:
human
GenBank:
Immunogen Catalog Number:
Ag33104

Conjugate:
Unconjugated
Full name:
Rho guanine nucleotide exchange factor (GEF) 11
Gene ID:
9826

Detection Antibody Information

Catalog Number:
84149-1-PBS
Host:
Rabbit
Isotype:
IgG
Purification Method:
Protein A purification

Clone ID:
241427A4
Reactivity:
human
GenBank:
Immunogen Catalog Number:
Ag33104

Conjugate:
Unconjugated
Full name:
Rho guanine nucleotide exchange factor (GEF) 11
Gene ID:
9826

Applications

Tested Applications:
Cytometric bead array, Sandwich ELISA

Range:
0.313-40 ng/mL (Cytometric Bead Array)
156-5000 pg/mL (Sandwich ELISA)

Recommended Dilutions:
It is recommended that this reagent should be titrated in each testing system to obtain optimal results.

Product Information

MP01063-2 targets ARHGEF11 in immunoassays as a matched antibody pair. Validated in Cytometric bead array, Sandwich ELISA.

Capture antibody: ARHGEF11 Recombinant antibody, PBS Only (Capture) 84149-3-PBS (241427D6). 100 µg. Concentration 1 mg/mL.

Detection antibody: ARHGEF11 Recombinant antibody, PBS Only (Detector) 84149-1-PBS (241427A4). 100 µg. Concentration 1 mg/mL.

Unconjugated rabbit recombinant monoclonal antibody pair in PBS only storage buffer at a concentration of 1 mg/mL, ready for conjugation. Created using Proteintech's proprietary in-house recombinant technology. Recombinant production enables unrivalled batch-to-batch consistency, easy scale-up, and future security of supply.

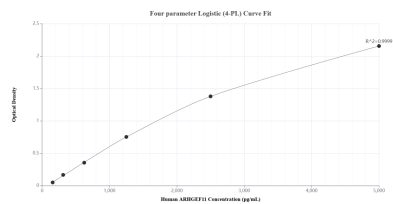
Matched antibody pairs are designed for use in a variety of assays and platforms that require matched antibody pairs.

Antibody use should be optimized for each application and assay.

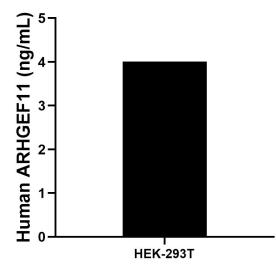
Storage

Storage:
Store at -80°C.
The product is shipped with ice packs. Upon receipt, store it immediately at -80°C
Storage buffer:
PBS only

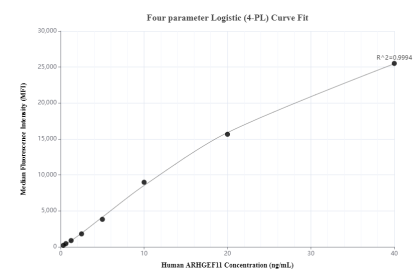
Selected Validation Data



Sandwich ELISA standard curve of MP01063-2, Human ARHGEF11 Recombinant Matched Antibody Pair - PBS only. 84149-3-PBS was coated to a plate as the capture antibody and incubated with serial dilutions of standard Ag33104. 84149-1-PBS was HRP conjugated as the detection antibody. Range: 156-5000 pg/mL



The mean ARHGEF11 concentration was determined to be 4.0 ng/mL in HEK-293T cell extract based on a 3.2 mg/mL extract load.



Cytometric bead array standard curve of MP01063-2, ARHGEF11 Recombinant Matched Antibody Pair, PBS Only. Capture antibody: 84149-3-PBS. Detection antibody: 84149-1-PBS. Standard: Ag33104. Range: 0.313-40 ng/mL