

Mouse E-Cadherin Recombinant Matched Antibody Pair, PBS Only

Catalog Number: **MP01047-2**

Capture Antibody Information

Catalog Number: 84111-1-PBS	Clone ID: 241282A5	Conjugate: Unconjugated
Host: Rabbit	Reactivity: mouse	Full name: cadherin 1
Isotype: IgG	GenBank: NM_009864.3	Gene ID: 12550
Purification Method: Protein A purification	Immunogen Catalog Number: Eg0975	

Detection Antibody Information

Catalog Number: 84111-2-PBS	Clone ID: 241282A8	Conjugate: Unconjugated
Host: Rabbit	Reactivity: human, mouse	Full name: cadherin 1
Isotype: IgG	GenBank: NM_009864.3	Gene ID: 12550
Purification Method: Protein A purification	Immunogen Catalog Number: Eg0975	

Applications

Tested Applications: Cytometric bead array, Sandwich ELISA	Range: 0.625-80 ng/mL (Cytometric Bead Array) 9.77-625 pg/mL (Sandwich ELISA)	Recommended Dilutions: It is recommended that this reagent should be titrated in each testing system to obtain optimal results.
--	--	---

Product Information

MP01047-2 targets E-Cadherin in immunoassays as a matched antibody pair. Validated in Cytometric bead array, Sandwich ELISA.

Capture antibody: Mouse E-Cadherin Recombinant antibody, PBS Only (Capture) 84111-1-PBS (241282A5). 100 µg. Concentration 1 mg/mL.

Detection antibody: Mouse E-Cadherin Recombinant antibody, PBS Only (Detector) 84111-2-PBS (241282A8). 100 µg. Concentration 1 mg/mL.

Unconjugated rabbit recombinant monoclonal antibody pair in PBS only storage buffer at a concentration of 1 mg/mL, ready for conjugation. Created using Proteintech's proprietary in-house recombinant technology. Recombinant production enables unrivalled batch-to-batch consistency, easy scale-up, and future security of supply.

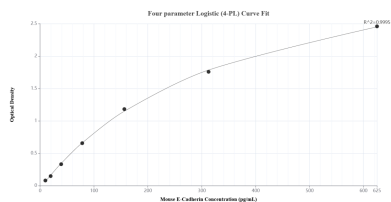
Matched antibody pairs are designed for use in a variety of assays and platforms that require matched antibody pairs.

Antibody use should be optimized for each application and assay.

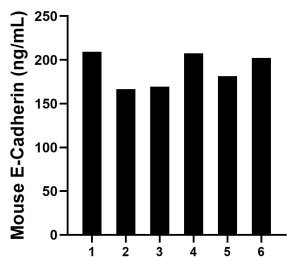
Storage

Storage:
Store at -80°C.
The product is shipped with ice packs. Upon receipt, store it immediately at -80°C
Storage buffer:
PBS only

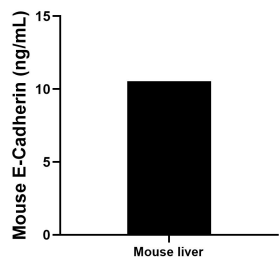
Selected Validation Data



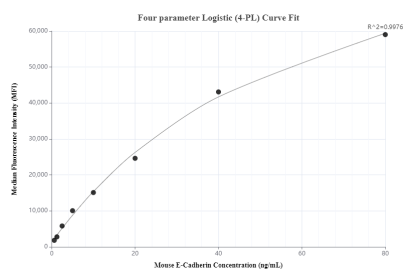
Sandwich ELISA standard curve of MP01047-2, Mouse E-Cadherin Recombinant Matched Antibody Pair - PBS only. 84111-1-PBS was coated to a plate as the capture antibody and incubated with serial dilutions of standard Eg0975. 84111-2-PBS was HRP conjugated as the detection antibody. Range: 9.77-625 pg/mL



Serum of six mice was measured. The E-Cadherin concentration of detected samples was determined to be 189.4 ng/mL with a range of 166.7-209.1 ng/mL



The mean E-Cadherin concentration was determined to be 10.6 ng/mL in mouse liver tissue extract based on a 5.0 mg/mL extract load.



Cytometric bead array standard curve of MP01047-2, MOUSE E-Cadherin Recombinant Matched Antibody Pair, PBS Only. Capture antibody: 84111-1-PBS. Detection antibody: 84111-2-PBS. Standard: Eg0975. Range: 0.625-80 ng/mL