

CD2 Recombinant Matched Antibody Pair, PBS Only

Catalog Number: **MP01045-4**

Capture Antibody Information

Catalog Number:
84108-5-PBS
Host:
Rabbit
Isotype:
IgG
Purification Method:
Protein A purification

Clone ID:
241222B8
Reactivity:
human
GenBank:
BC033583
Immunogen Catalog Number:
Eg1271

Conjugate:
Unconjugated
Full name:
CD2 molecule
Gene ID:
914

Detection Antibody Information

Catalog Number:
84108-3-PBS
Host:
Rabbit
Isotype:
IgG
Purification Method:
Protein A purification

Clone ID:
241222E10
Reactivity:
human
GenBank:
BC033583

Conjugate:
Unconjugated
Full name:
CD2 molecule
Gene ID:
914

Applications

Tested Applications:
Sandwich ELISA

Range:
19.5-1250 pg/mL (Sandwich ELISA)

Recommended Dilutions:
It is recommended that this reagent should be titrated in each testing system to obtain optimal results.

Product Information

MP01045-4 targets CD2 in immunoassays as a matched antibody pair. Validated in Sandwich ELISA.

Capture antibody: CD2 Recombinant antibody, PBS Only (Capture) 84108-5-PBS (241222B8). 100 μ g. Concentration 1 mg/mL.

Detection antibody: CD2 Recombinant antibody, PBS Only (Detector) 84108-3-PBS (241222E10). 100 μ g. Concentration 1 mg/mL.

Unconjugated rabbit recombinant monoclonal antibody pair in PBS only storage buffer at a concentration of 1 mg/mL, ready for conjugation. Created using Proteintech's proprietary in-house recombinant technology. Recombinant production enables unrivalled batch-to-batch consistency, easy scale-up, and future security of supply.

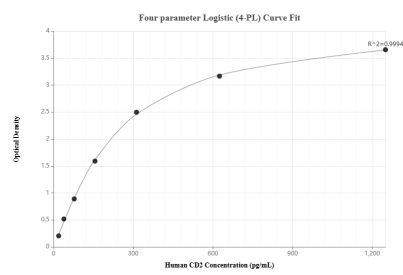
Matched antibody pairs are designed for use in a variety of assays and platforms that require matched antibody pairs.

Antibody use should be optimized for each application and assay.

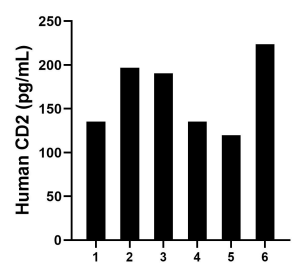
Storage

Storage:
Store at -80°C.
The product is shipped with ice packs. Upon receipt, store it immediately at -80°C
Storage buffer:
PBS only

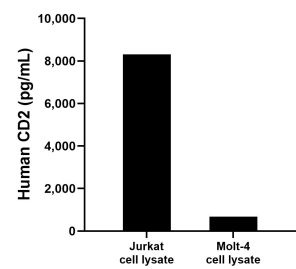
Selected Validation Data



Sandwich ELISA standard curve of MP01045-4, Human CD2 Recombinant Matched Antibody Pair - PBS only. 84108-5-PBS was coated to a plate as the capture antibody and incubated with serial dilutions of standard Eg1271. 84108-3-PBS was HRP conjugated as the detection antibody. Range: 19.5-1250 pg/mL



Serum of six individual healthy human donors was measured. The human CD2 concentration of detected samples was determined to be 167.0 pg/mL with a range of 119.9 - 223.9 pg/mL



Jurkat and Molt-4 cell lysate were measured. The human CD2 concentration of detected samples was determined to be 8,318.1 pg/mL (based on a 1.0 mg/mL extract load) in Jurkat cell lysate and 679.3 pg/mL (based on a 4.5 mg/mL extract load) in Molt-4 cell lysate.