

# PROS1 Recombinant Matched Antibody Pair, PBS Only

Catalog Number: **MP01044-1**

## Capture Antibody Information

<b>Catalog Number:</b> 84107-2-PBS	<b>Clone ID:</b> 241241E5	<b>Conjugate:</b> Unconjugated
<b>Host:</b> Rabbit	<b>Reactivity:</b> human	<b>Full name:</b> protein S (alpha)
<b>Isotype:</b> IgG	<b>GenBank:</b> BC015801	<b>Gene ID:</b> 5627
<b>Purification Method:</b> Protein A purification	<b>Immunogen Catalog Number:</b> Ag10539	

## Detection Antibody Information

<b>Catalog Number:</b> 84107-1-PBS	<b>Clone ID:</b> 241241B8	<b>Conjugate:</b> Unconjugated
<b>Host:</b> Rabbit	<b>Reactivity:</b> human	<b>Full name:</b> protein S (alpha)
<b>Isotype:</b> IgG	<b>GenBank:</b> BC015801	<b>Gene ID:</b> 5627
<b>Purification Method:</b> Protein A purification	<b>Immunogen Catalog Number:</b> Ag10539	

## Applications

<b>Tested Applications:</b> Cytometric bead array, Sandwich ELISA	<b>Range:</b> 0.313-40 ng/mL (Cytometric Bead Array) 0.469-30 ng/mL (Sandwich ELISA)	<b>Recommended Dilutions:</b> It is recommended that this reagent should be titrated in each testing system to obtain optimal results.
----------------------------------------------------------------------	--------------------------------------------------------------------------------------------	-------------------------------------------------------------------------------------------------------------------------------------------

## Product Information

MP01044-1 targets PROS1 in immunoassays as a matched antibody pair. Validated in Cytometric bead array, Sandwich ELISA.

Capture antibody: PROS1 Recombinant antibody, PBS Only (Capture) 84107-2-PBS (241241E5). 100 µg. Concentration 1 mg/mL.

Detection antibody: PROS1 Recombinant antibody, PBS Only (Detector) 84107-1-PBS (241241B8). 100 µg. Concentration 1 mg/mL.

Alternative PROS1 matched antibody pairs: MP01044-2, MP50227-1

Unconjugated rabbit recombinant monoclonal antibody pair in PBS only storage buffer at a concentration of 1 mg/mL, ready for conjugation. Created using Proteintech's proprietary in-house recombinant technology. Recombinant production enables unrivalled batch-to-batch consistency, easy scale-up, and future security of supply.

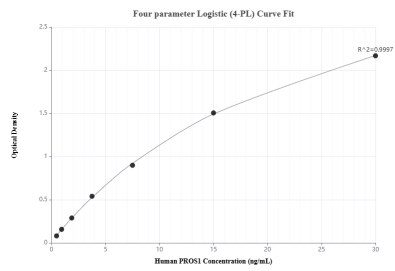
Matched antibody pairs are designed for use in a variety of assays and platforms that require matched antibody pairs.

Antibody use should be optimized for each application and assay.

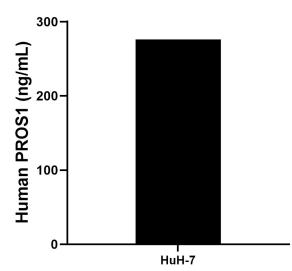
## Storage

**Storage:**  
Store at -80°C.  
**The product is shipped with ice packs. Upon receipt, store it immediately at -80°C**  
**Storage buffer:**  
PBS only

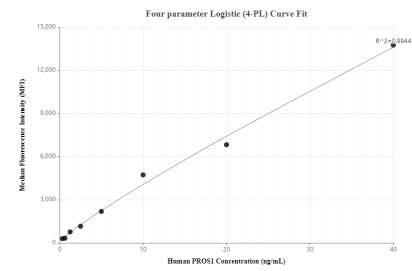
## Selected Validation Data



Sandwich ELISA standard curve of MP01044-1, Human PROS1 Recombinant Matched Antibody Pair - PBS only. 84107-2-PBS was coated to a plate as the capture antibody and incubated with serial dilutions of standard Ag10539. 84107-1-PBS was HRP conjugated as the detection antibody. Range: 0.469-30 ng/mL



The mean PROS1 concentration was determined to be 276.09 ng/mL in HuH-7 cell extract based on a 1.4 mg/mL extract load.



Cytometric bead array standard curve of MP01044-1, PROS1 Recombinant Matched Antibody Pair, PBS Only. Capture antibody: 84107-2-PBS. Detection antibody: 84107-1-PBS. Standard: Ag10539. Range: 0.313-40 ng/mL