

DNA2 Recombinant Matched Antibody Pair, PBS Only

Catalog Number: **MP01042-3**

Capture Antibody Information

Catalog Number:
84105-4-PBS
Host:
Rabbit
Isotype:
IgG
Purification Method:
Protein A purification

Clone ID:
241073G11
Reactivity:
human
GenBank:
NM_001080449

Conjugate:
Unconjugated
Full name:
DNA replication helicase 2 homolog (yeast)
Gene ID:
1763

Detection Antibody Information

Catalog Number:
84105-3-PBS
Host:
Rabbit
Isotype:
IgG
Purification Method:
Protein A purification

Clone ID:
241073B10
Reactivity:
human
GenBank:
NM_001080449

Conjugate:
Unconjugated
Full name:
DNA replication helicase 2 homolog (yeast)
Gene ID:
1763

Applications

Tested Applications:
Sandwich ELISA

Range:
78.1-2500 pg/mL (Sandwich ELISA)

Recommended Dilutions:
It is recommended that this reagent should be titrated in each testing system to obtain optimal results.

Product Information

MP01042-3 targets DNA2 in immunoassays as a matched antibody pair. Validated in Sandwich ELISA.

Capture antibody: DNA2 Recombinant antibody, PBS Only (Capture) 84105-4-PBS (241073G11). 100 µg. Concentration 1 mg/mL.

Detection antibody: DNA2 Recombinant antibody, PBS Only (Capture/Detector) 84105-3-PBS (241073B10). 100 µg. Concentration 1 mg/mL.

Unconjugated rabbit recombinant monoclonal antibody pair in PBS only storage buffer at a concentration of 1 mg/mL, ready for conjugation. Created using Proteintech's proprietary in-house recombinant technology. Recombinant production enables unrivalled batch-to-batch consistency, easy scale-up, and future security of supply.

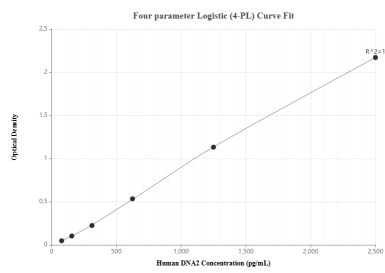
Matched antibody pairs are designed for use in a variety of assays and platforms that require matched antibody pairs.

Antibody use should be optimized for each application and assay.

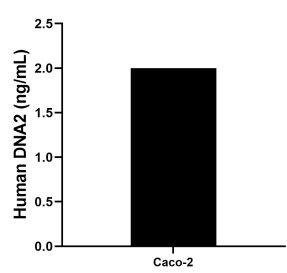
Storage

Storage:
Store at -80°C.
The product is shipped with ice packs. Upon receipt, store it immediately at -80°C
Storage buffer:
PBS only

Selected Validation Data



Sandwich ELISA standard curve of MP01042-3, Human DNA2 Recombinant Matched Antibody Pair - PBS only. 84105-4-PBS was coated to a plate as the capture antibody and incubated with serial dilutions of standard SY00221. 84105-3-PBS was HRP conjugated as the detection antibody. Range: 78.1-2500 pg/mL



The mean DNA2 concentration was determined to be 2.00 ng/mL in Caco-2 cell extract based on a 1.5 mg/mL extract load.