

# Complement factor B Recombinant Matched Antibody Pair, PBS Only

Catalog Number: **MP01031-4**

## Capture Antibody Information

**Catalog Number:**  
84101-10-PBS  
**Host:**  
Rabbit  
**Isotype:**  
IgG  
**Purification Method:**  
Protein A purification

**Clone ID:**  
242709A6  
**Reactivity:**  
human  
**GenBank:**  
NM\_001710.6

**Conjugate:**  
Unconjugated  
**Full name:**  
complement factor B  
**Gene ID:**  
629

## Detection Antibody Information

**Catalog Number:**  
84101-8-PBS  
**Host:**  
Rabbit  
**Isotype:**  
IgG  
**Purification Method:**  
Protein A purification

**Clone ID:**  
242709A2  
**Reactivity:**  
human  
**GenBank:**  
NM\_001710.6

**Conjugate:**  
Unconjugated  
**Full name:**  
complement factor B  
**Gene ID:**  
629

## Applications

**Tested Applications:**  
Sandwich ELISA

**Range:**  
78.1-5000 pg/mL (Sandwich ELISA)

**Recommended Dilutions:**  
It is recommended that this reagent should be titrated in each testing system to obtain optimal results.

## Product Information

MP01031-4 targets Complement factor B in immunoassays as a matched antibody pair. Validated in Sandwich ELISA.

Capture antibody: Complement factor B Recombinant antibody, PBS Only (Capture) 84101-10-PBS (242709A6). 100 µg. Concentration 1 mg/mL.

Detection antibody: Complement factor B Recombinant antibody, PBS Only (Detector) 84101-8-PBS (242709A2). 100 µg. Concentration 1 mg/mL.

Unconjugated rabbit recombinant monoclonal antibody pair in PBS only storage buffer at a concentration of 1 mg/mL, ready for conjugation. Created using Proteintech's proprietary in-house recombinant technology. Recombinant production enables unrivalled batch-to-batch consistency, easy scale-up, and future security of supply.

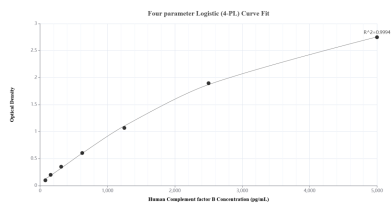
Matched antibody pairs are designed for use in a variety of assays and platforms that require matched antibody pairs.

Antibody use should be optimized for each application and assay.

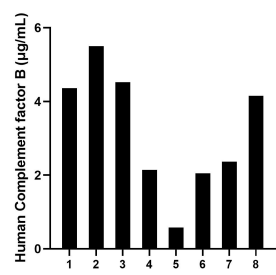
## Storage

**Storage:**  
Store at -80°C.  
**The product is shipped with ice packs. Upon receipt, store it immediately at -80°C**  
**Storage buffer:**  
PBS only

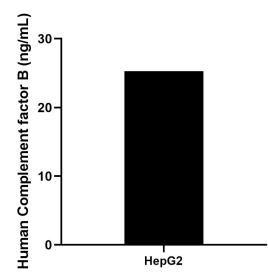
## Selected Validation Data



Sandwich ELISA standard curve of MP01031-4, Human Complement factor B Recombinant Matched Antibody Pair - PBS only. 84101-10-PBS was coated to a plate as the capture antibody and incubated with serial dilutions of standard Eg1224. 84101-8-PBS was HRP conjugated as the detection antibody. Range: 78.1-5000 pg/mL



Serum of eight individual healthy human donors was measured. The Complement factor B concentration of detected samples was determined to be 3.2 µg/mL with a range of 0.6-5.5 µg/mL.



The mean Complement factor B concentration was determined to be 25.3 ng/mL in HepG2 cell extract based on a 1.8 mg/mL extract load.