

NOTCH2 Recombinant Matched Antibody Pair, PBS Only

Catalog Number: **MP01016-2**

Capture Antibody Information

Catalog Number: 84074-3-PBS	Clone ID: 241162F4	Conjugate: Unconjugated
Host: Rabbit	Reactivity: human	Full name: Notch homolog 2 (Drosophila)
Isotype: IgG	GenBank: NM_024408	Gene ID: 4853
Purification Method: Protein A purification	Immunogen Catalog Number: Ag29413	

Detection Antibody Information

Catalog Number: 84074-1-PBS	Clone ID: 241162C7	Conjugate: Unconjugated
Host: Rabbit	Reactivity: human	Full name: Notch homolog 2 (Drosophila)
Isotype: IgG	GenBank: NM_024408	Gene ID: 4853
Purification Method: Protein A purification	Immunogen Catalog Number: Ag29413	

Applications

Tested Applications: Cytometric bead array, Sandwich ELISA	Range: 0.156-20 ng/mL (Cytometric Bead Array) 15.6-1000 pg/mL (Sandwich ELISA)	Recommended Dilutions: It is recommended that this reagent should be titrated in each testing system to obtain optimal results.
---	--	--

Product Information

MP01016-2 targets NOTCH2 in immunoassays as a matched antibody pair. Validated in Cytometric bead array, Sandwich ELISA.

Capture antibody: NOTCH2 Recombinant antibody, PBS Only (Capture) 84074-3-PBS (241162F4). 100 µg. Concentration 1 mg/mL.

Detection antibody: NOTCH2 Recombinant antibody, PBS Only (Detector) 84074-1-PBS (241162C7). 100 µg. Concentration 1 mg/mL.

Unconjugated rabbit recombinant monoclonal antibody pair in PBS only storage buffer at a concentration of 1 mg/mL, ready for conjugation. Created using Proteintech's proprietary in-house recombinant technology. Recombinant production enables unrivalled batch-to-batch consistency, easy scale-up, and future security of supply.

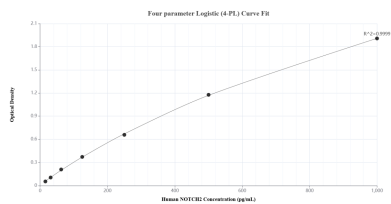
Matched antibody pairs are designed for use in a variety of assays and platforms that require matched antibody pairs.

Antibody use should be optimized for each application and assay.

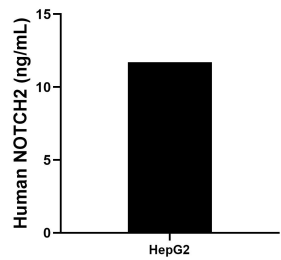
Storage

Storage:
Store at -80°C.
The product is shipped with ice packs. Upon receipt, store it immediately at -80°C
Storage buffer:
PBS only

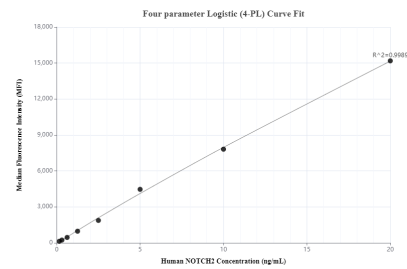
Selected Validation Data



Sandwich ELISA standard curve of MP01016-2, Human NOTCH2 Recombinant Matched Antibody Pair - PBS only. 84074-3-PBS was coated to a plate as the capture antibody and incubated with serial dilutions of standard Ag29413. 84074-1-PBS was HRP conjugated as the detection antibody. Range: 15.6-1000 pg/mL.



The mean NOTCH2 concentration was determined to be 11.7 ng/mL in HepG2 cell extract based on a 1.0 mg/mL extract load.



Cytometric bead array standard curve of MP01016-2, NOTCH2 Recombinant Matched Antibody Pair, PBS Only. Capture antibody: 84074-3-PBS. Detection antibody: 84074-1-PBS. Standard: Ag29413. Range: 0.156-20 ng/mL.