

Mouse IL-1R1 Recombinant Matched Antibody Pair, PBS Only

Catalog Number: **MP01012-1**

Capture Antibody Information

Catalog Number:

84094-5-PBS

Host:

Rabbit

Isotype:

IgG

Purification Method:

Protein A purification

Clone ID:

241392H8

Reactivity:

mouse

GenBank:

NM_008362.2

Conjugate:

Unconjugated

Full name:

interleukin 1 receptor, type I

Gene ID:

16177

Detection Antibody Information

Catalog Number:

84094-1-PBS

Host:

Rabbit

Isotype:

IgG

Purification Method:

Protein A purification

Clone ID:

241392B8

Reactivity:

mouse

GenBank:

NM_008362.2

Conjugate:

Unconjugated

Full name:

interleukin 1 receptor, type I

Gene ID:

16177

Applications

Tested Applications:

Cytometric bead array, Sandwich ELISA

Range:0.781-100 ng/mL (Cytometric Bead Array)
39.1-2500 pg/mL (Sandwich ELISA)**Recommended Dilutions:**

It is recommended that this reagent should be titrated in each testing system to obtain optimal results.

Product Information

MP01012-1 targets IL-1R1 in immunoassays as a matched antibody pair. Validated in Cytometric bead array, Sandwich ELISA.

Capture antibody: Mouse IL-1R1 Recombinant antibody, PBS Only (Capture) 84094-5-PBS (241392H8). 100 µg. Concentration 1 mg/mL.

Detection antibody: Mouse IL-1R1 Recombinant antibody, PBS Only (Detector) 84094-1-PBS (241392B8). 100 µg. Concentration 1 mg/mL.

Unconjugated rabbit recombinant monoclonal antibody pair in PBS only storage buffer at a concentration of 1 mg/mL, ready for conjugation. Created using Proteintech's proprietary in-house recombinant technology. Recombinant production enables unrivalled batch-to-batch consistency, easy scale-up, and future security of supply.

Matched antibody pairs are designed for use in a variety of assays and platforms that require matched antibody pairs.

Antibody use should be optimized for each application and assay.

Storage

Storage:

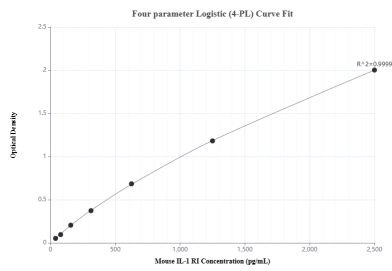
Store at -80°C.

The product is shipped with ice packs. Upon receipt, store it immediately at -80°C

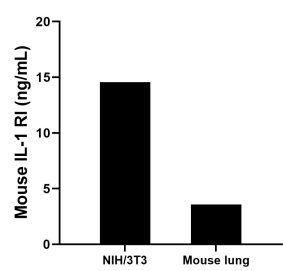
Storage buffer:

PBS only

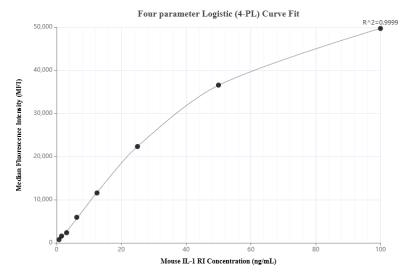
Selected Validation Data



Sandwich ELISA standard curve of MP01012-1, Mouse IL-1R1 Recombinant Matched Antibody Pair - PBS only. 84094-5-PBS was coated to a plate as the capture antibody and incubated with serial dilutions of standard Eg1158. 84094-1-PBS was HRP conjugated as the detection antibody. Range: 39.1-2500 pg/mL



The mean IL-1R1 concentration was determined to be 14.57 ng/mL in NIH/3T3 cell extract based on a 2.5 mg/mL extract load and 3.58 ng/mL in rat lung tissue extract based on a 4.0 mg/mL extract load.



Cytometric bead array standard curve of MP01012-1, MOUSE IL-1R1 Recombinant Matched Antibody Pair, PBS Only. Capture antibody: 84094-5-PBS. Detection antibody: 84094-1-PBS. Standard: Eg1158. Range: 0.781-100 ng/mL