

# MMP-9 Recombinant Matched Antibody Pair, PBS Only

Catalog Number: **MP01003-2**

## Capture Antibody Information

**Catalog Number:**  
82685-18-PBS  
**Host:**  
Rabbit  
**Isotype:**  
IgG  
**Purification Method:**  
Protein A purification

**Clone ID:**  
241224C6  
**Reactivity:**  
human  
**GenBank:**  
BC006093

**Conjugate:**  
Unconjugated  
**Full name:**  
matrix metalloproteinase 9  
(gelatinase B, 92kDa gelatinase,  
92kDa type IV collagenase)  
**Gene ID:**  
4318

## Detection Antibody Information

**Catalog Number:**  
82685-16-PBS  
**Host:**  
Rabbit  
**Isotype:**  
IgG  
**Purification Method:**  
Protein A purification

**Clone ID:**  
241224B5  
**Reactivity:**  
human  
**GenBank:**  
BC006093

**Conjugate:**  
Unconjugated  
**Full name:**  
matrix metalloproteinase 9  
(gelatinase B, 92kDa gelatinase,  
92kDa type IV collagenase)  
**Gene ID:**  
4318

## Applications

**Tested Applications:**  
Cytometric bead array, Sandwich  
ELISA

**Range:**  
0.625-80 ng/mL (Cytometric Bead  
Array)  
39-2500 pg/mL (Sandwich ELISA)

**Recommended Dilutions:**  
It is recommended that this reagent  
should be titrated in each testing  
system to obtain optimal results.

## Product Information

MP01003-2 targets MMP-9 in immunoassays as a matched antibody pair. Validated in Cytometric bead array, Sandwich ELISA.

Capture antibody: MMP-9 Recombinant antibody, PBS Only (Capture) 82685-18-PBS (241224C6). 100 µg. Concentration 1 mg/mL.

Detection antibody: MMP-9 Recombinant antibody, PBS Only (Detector) 82685-16-PBS (241224B5). 100 µg. Concentration 1 mg/mL.

Alternative MMP-9 matched antibody pairs: MP00757-1, MP01003-1, MP01003-3

Unconjugated rabbit recombinant monoclonal antibody pair in PBS only storage buffer at a concentration of 1 mg/mL, ready for conjugation. Created using Proteintech's proprietary in-house recombinant technology. Recombinant production enables unrivalled batch-to-batch consistency, easy scale-up, and future security of supply.

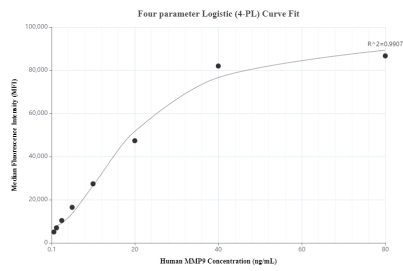
Matched antibody pairs are designed for use in a variety of assays and platforms that require matched antibody pairs.

Antibody use should be optimized for each application and assay.

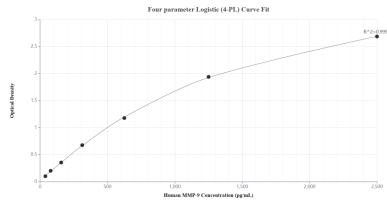
## Storage

**Storage:**  
Store at -80°C.  
**The product is shipped with ice packs. Upon receipt, store it immediately at -80°C**  
**Storage buffer:**  
PBS only

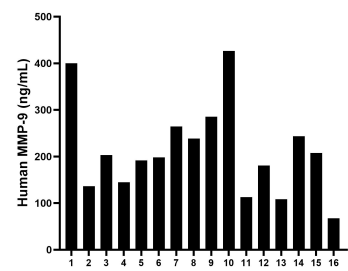
Selected Validation Data



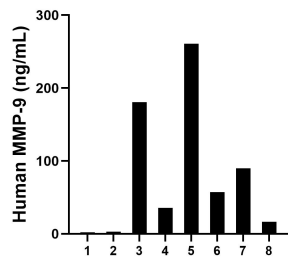
Cytometric bead array standard curve of MP01003-2, MMP-9 Recombinant Matched Antibody Pair, PBS Only. Capture antibody: 82685-18-PBS. Detection antibody: 82685-16-PBS. Standard: Eg0442. Range: 0.625-80 ng/mL



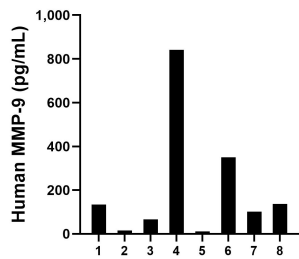
Sandwich ELISA standard curve of MP01003-2, Human MMP-9 Recombinant Matched Antibody Pair - PBS only. 82685-18-PBS was coated to a plate as the capture antibody and incubated with serial dilutions of standard Eg0442. 82685-16-PBS was HRP conjugated as the detection antibody. Range: 39-2500 pg/mL



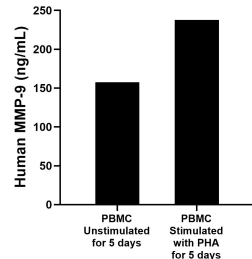
Serum of sixteen individual healthy human donors was measured. The MMP-9 concentration of detected samples was determined to be 213.0 ng/mL with a range of 67.5 - 426.4 ng/mL



Saliva of eight individual healthy human donors was measured. The MMP-9 concentration of detected samples was determined to be 80.7 ng/mL with a range of 1.9 - 260.9 ng/mL



Urine of eight individual healthy human donors was measured. The MMP-9 concentration of detected samples was determined to be 207.3 pg/mL with a range of 11.4 - 841.8 pg/mL



Human peripheral blood mononuclear cells (PBMC) were cultured unstimulated or stimulated with 10 µg/mL PHA for 5 days. The mean MMP-9 concentration was determined to be 157.3 ng/mL in unstimulated PBMC supernatant, 237.9 ng/mL in PHA stimulated PBMC supernatant.