

# Leptin Recombinant Matched Antibody Pair, PBS Only

Catalog Number: MP00993-1

## Capture Antibody Information

**Catalog Number:**

84072-2-PBS

**Host:**

Rabbit

**Isotype:**

IgG

**Purification Method:**

Protein A purification

**Clone ID:**

240720C8

**Reactivity:**

human

**GenBank:**

BC060830

**Conjugate:**

Unconjugated

**Full name:**

leptin

**Gene ID:**

3952

## Detection Antibody Information

**Catalog Number:**

84072-4-PBS

**Host:**

Rabbit

**Isotype:**

IgG

**Purification Method:**

Protein A purification

**Clone ID:**

240720G6

**Reactivity:**

human

**GenBank:**

BC060830

**Conjugate:**

Unconjugated

**Full name:**

leptin

**Gene ID:**

3952

## Applications

**Tested Applications:**

Cytometric bead array, Sandwich ELISA

**Range:**0.313-20 ng/mL (Cytometric Bead Array)  
31.3-1000 pg/mL (Sandwich ELISA)**Recommended Dilutions:**

It is recommended that this reagent should be titrated in each testing system to obtain optimal results.

## Product Information

MP00993-1 targets Leptin in immunoassays as a matched antibody pair. Validated in Cytometric bead array, Sandwich ELISA.

Capture antibody: Leptin Recombinant antibody, PBS Only (Capture) 84072-2-PBS (240720C8). 100 µg. Concentration 1 mg/mL.

Detection antibody: Leptin Recombinant antibody, PBS Only (Detector) 84072-4-PBS (240720G6). 100 µg. Concentration 1 mg/mL.

Unconjugated rabbit recombinant monoclonal antibody pair in PBS only storage buffer at a concentration of 1 mg/mL, ready for conjugation. Created using Proteintech's proprietary in-house recombinant technology. Recombinant production enables unrivalled batch-to-batch consistency, easy scale-up, and future security of supply.

Matched antibody pairs are designed for use in a variety of assays and platforms that require matched antibody pairs.

Antibody use should be optimized for each application and assay.

## Storage

**Storage:**

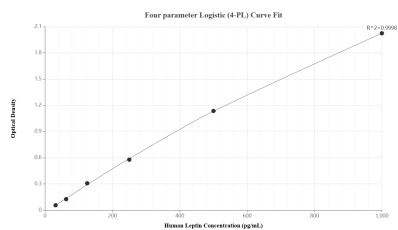
Store at -80°C.

The product is shipped with ice packs. Upon receipt, store it immediately at -80°C

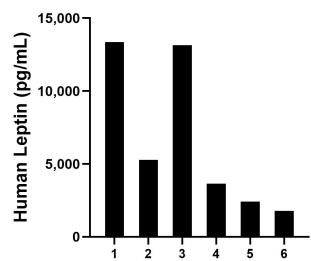
**Storage buffer:**

PBS only

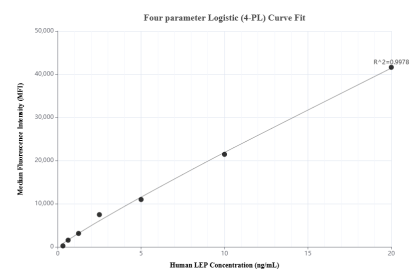
## Selected Validation Data



Sandwich ELISA standard curve of MP00993-1, Human Leptin Recombinant Matched Antibody Pair - PBS only. 84072-2-PBS was coated to a plate as the capture antibody and incubated with serial dilutions of standard Eg0834. 84072-4-PBS was HRP conjugated as the detection antibody. Range: 31.3-1000 pg/mL.



Serum of six individual healthy human donors was measured. The Leptin concentration of detected samples was determined to be 6602.2 pg/mL with a range of 1788.2-13350.2 pg/mL.



Cytometric bead array standard curve of MP00993-1, LEP Recombinant Matched Antibody Pair, PBS Only. Capture antibody: 84072-2-PBS. Detection antibody: 84072-4-PBS. Standard: Eg0834. Range: 0.313-20 ng/mL.