

LRRK2 Recombinant Matched Antibody Pair, PBS Only

Catalog Number: **MP00980-2**

Capture Antibody Information

Catalog Number: 84062-4-PBS	Clone ID: 241258E4	Conjugate: Unconjugated
Host: Rabbit	Reactivity: human	Full name: leucine-rich repeat kinase 2
Isotype: IgG	GenBank: NM_198578	Gene ID: 120892
Purification Method: Protein A purification	Immunogen Catalog Number: Ag33713	

Detection Antibody Information

Catalog Number: 84062-5-PBS	Clone ID: 241258F11	Conjugate: Unconjugated
Host: Rabbit	Reactivity: human	Full name: leucine-rich repeat kinase 2
Isotype: IgG	GenBank: NM_198578	Gene ID: 120892
Purification Method: Protein A purification	Immunogen Catalog Number: Ag33713	

Applications

Tested Applications: Sandwich ELISA	Range: 0.156-10 ng/mL (Sandwich ELISA)	Recommended Dilutions: It is recommended that this reagent should be titrated in each testing system to obtain optimal results.
---	--	---

Product Information

MP00980-2 targets LRRK2 in immunoassays as a matched antibody pair. Validated in Sandwich ELISA.

Capture antibody: LRRK2 Recombinant antibody, PBS Only (Capture) 84062-4-PBS (241258E4). 100 µg. Concentration 1 mg/mL.

Detection antibody: LRRK2 Recombinant antibody, PBS Only (Detector) 84062-5-PBS (241258F11). 100 µg. Concentration 1 mg/mL.

Alternative LRRK2 matched antibody pairs: MP00980-1

Unconjugated rabbit recombinant monoclonal antibody pair in PBS only storage buffer at a concentration of 1 mg/mL, ready for conjugation. Created using Proteintech's proprietary in-house recombinant technology. Recombinant production enables unrivalled batch-to-batch consistency, easy scale-up, and future security of supply.

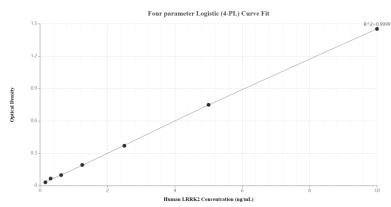
Matched antibody pairs are designed for use in a variety of assays and platforms that require matched antibody pairs.

Antibody use should be optimized for each application and assay.

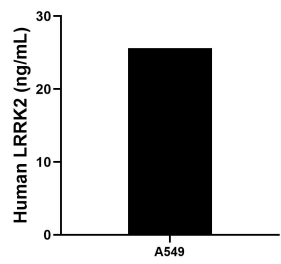
Storage

Storage:
Store at -80°C.
The product is shipped with ice packs. Upon receipt, store it immediately at -80°C
Storage buffer:
PBS only

Selected Validation Data



Sandwich ELISA standard curve of MP00980-2, Human LRRK2 Recombinant Matched Antibody Pair - PBS only. 84062-4-PBS was coated to a plate as the capture antibody and incubated with serial dilutions of standard Ag33713. 84062-5-PBS was HRP conjugated as the detection antibody. Range: 0.156-10 ng/mL.



The mean LRRK2 concentration was determined to be 25.68 ng/mL in A549 cell extract based on a 1.00 mg/mL extract load.