

# KLK3/PSA Recombinant Matched Antibody Pair, PBS Only

Catalog Number: **MP00975-3**

## Capture Antibody Information

**Catalog Number:**

84059-9-PBS

**Host:**

Rabbit

**Isotype:**

IgG

**Purification Method:**

Protein A purification

**Clone ID:**

241223D6

**Reactivity:**

human

**GenBank:**

NM\_001648.2

**Conjugate:**

Unconjugated

**Full name:**

kallikrein-related peptidase 3

**Gene ID:**

354

## Detection Antibody Information

**Catalog Number:**

84059-4-PBS

**Host:**

Rabbit

**Isotype:**

IgG

**Purification Method:**

Protein A purification

**Clone ID:**

241223H3

**Reactivity:**

human

**GenBank:**

NM\_001648.2

**Conjugate:**

Unconjugated

**Full name:**

kallikrein-related peptidase 3

**Gene ID:**

354

## Applications

**Tested Applications:**

Sandwich ELISA

**Range:**

9.38-600 pg/mL (Sandwich ELISA)

**Recommended Dilutions:**

It is recommended that this reagent should be titrated in each testing system to obtain optimal results.

## Product Information

MP00975-3 targets KLK3/PSA in immunoassays as a matched antibody pair. Validated in Sandwich ELISA.

Capture antibody: KLK3/PSA Recombinant antibody, PBS Only (Capture) 84059-9-PBS (241223D6). 100  $\mu$ g. Concentration 1 mg/mL.

Detection antibody: KLK3/PSA Recombinant antibody, PBS Only (Capture/Detector) 84059-4-PBS (241223H3). 100  $\mu$ g. Concentration 1 mg/mL.

Unconjugated rabbit recombinant monoclonal antibody pair in PBS only storage buffer at a concentration of 1 mg/mL, ready for conjugation. Created using Proteintech's proprietary in-house recombinant technology. Recombinant production enables unrivalled batch-to-batch consistency, easy scale-up, and future security of supply.

Matched antibody pairs are designed for use in a variety of assays and platforms that require matched antibody pairs.

Antibody use should be optimized for each application and assay.

## Storage

**Storage:**

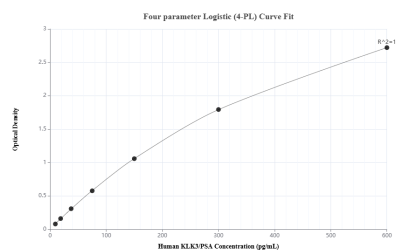
Store at -80°C.

**The product is shipped with ice packs. Upon receipt, store it immediately at -80°C**

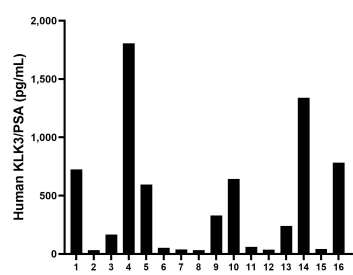
**Storage buffer:**

PBS only

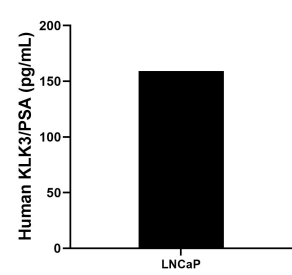
## Selected Validation Data



Sandwich ELISA standard curve of MP00975-3, Human KLK3/PSA Recombinant Matched Antibody Pair - PBS only. 84059-9-PBS was coated to a plate as the capture antibody and incubated with serial dilutions of standard Ego869. 84059-4-PBS was HRP conjugated as the detection antibody. Range: 9.38-600 pg/mL



Serum of sixteen individual healthy human donors was measured. The human KLK3/PSA concentration of detected samples was determined to be 432.7 pg/mL with a range of 32.3 - 1804.8 pg/mL



LNCaP human prostate cancer cells were cultured in RPMI supplemented with 10% fetal bovine serum, 10 mM HEPES and 1 mM sodium pyruvate. An aliquot of the cell culture supernate was removed, assayed for human KLK3/PSA, and measured 159.3 pg/mL