

RNF40 Recombinant Matched Antibody Pair, PBS Only

Catalog Number: MP00974-1

Capture Antibody Information

Catalog Number: 84058-1-PBS	Clone ID: 241214C3	Conjugate: Unconjugated
Host: Rabbit	Reactivity: human	Full name: ring finger protein 40
Isotype: IgG	GenBank: BC006133	Gene ID: 9810
Purification Method: Protein A purification	Immunogen Catalog Number: Ag8047	

Detection Antibody Information

Catalog Number: 84058-3-PBS	Clone ID: 241214E10	Conjugate: Unconjugated
Host: Rabbit	Reactivity: human	Full name: ring finger protein 40
Isotype: IgG	GenBank: BC006133	Gene ID: 9810
Purification Method: Protein A purification	Immunogen Catalog Number: Ag8047	

Applications

Tested Applications: Cytometric bead array, Sandwich ELISA	Range: 0.156-20 ng/mL (Cytometric Bead Array) 31.3-2000 pg/mL (Sandwich ELISA)	Recommended Dilutions: It is recommended that this reagent should be titrated in each testing system to obtain optimal results.
---	--	--

Product Information

MP00974-1 targets RNF40 in immunoassays as a matched antibody pair. Validated in Cytometric bead array, Sandwich ELISA.

Capture antibody: RNF40 Recombinant antibody, PBS Only (Capture) 84058-1-PBS (241214C3). 100 µg. Concentration 1 mg/mL.

Detection antibody: RNF40 Recombinant antibody, PBS Only (Detector) 84058-3-PBS (241214E10). 100 µg. Concentration 1 mg/mL.

Alternative RNF40 matched antibody pairs: MP00974-2

Unconjugated rabbit recombinant monoclonal antibody pair in PBS only storage buffer at a concentration of 1 mg/mL, ready for conjugation. Created using Proteintech's proprietary in-house recombinant technology. Recombinant production enables unrivalled batch-to-batch consistency, easy scale-up, and future security of supply.

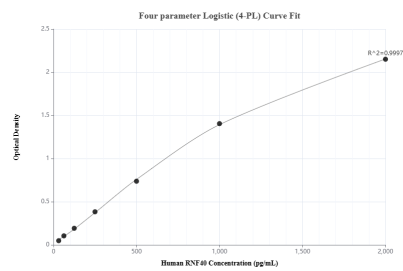
Matched antibody pairs are designed for use in a variety of assays and platforms that require matched antibody pairs.

Antibody use should be optimized for each application and assay.

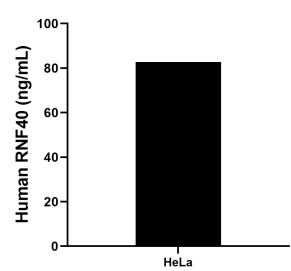
Storage

Storage:
Store at -80°C.
The product is shipped with ice packs. Upon receipt, store it immediately at -80°C
Storage buffer:
PBS only

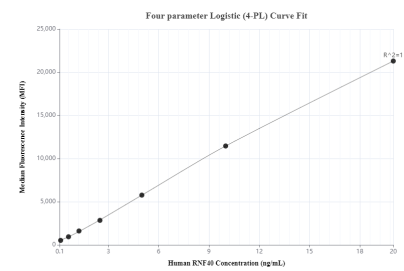
Selected Validation Data



Sandwich ELISA standard curve of MP00974-1, Human RNF40 Recombinant Matched Antibody Pair - PBS only. 84058-1-PBS was coated to a plate as the capture antibody and incubated with serial dilutions of standard Ag8047. 84058-3-PBS was HRP conjugated as the detection antibody. Range: 31.3-2000 pg/mL



The mean RNF40 concentration was determined to be 82.72 ng/mL in HeLa cell extract based on a 2.0 mg/mL extract load.



Cytometric bead array standard curve of MP00974-1, RNF40 Recombinant Matched Antibody Pair, PBS Only. Capture antibody: 84058-1-PBS. Detection antibody: 84058-3-PBS. Standard: Ag8047. Range: 0.156-20 ng/mL