

MRP3/ABCC3 Recombinant Matched Antibody Pair, PBS Only

Catalog Number: **MP00973-2**

Capture Antibody Information

Catalog Number:
84057-1-PBS
Host:
Rabbit
Isotype:
IgG
Purification Method:
Protein A purification

Clone ID:
241209B9
Reactivity:
human
GenBank:
BC137348
Immunogen Catalog Number:
Ag19786

Conjugate:
Unconjugated
Full name:
ATP-binding cassette, sub-family C (CFTR/MRP), member 3
Gene ID:
8714

Detection Antibody Information

Catalog Number:
84057-3-PBS
Host:
Rabbit
Isotype:
IgG
Purification Method:
Protein A purification

Clone ID:
241209D1
Reactivity:
human
GenBank:
BC137348
Immunogen Catalog Number:
Ag19786

Conjugate:
Unconjugated
Full name:
ATP-binding cassette, sub-family C (CFTR/MRP), member 3
Gene ID:
8714

Applications

Tested Applications:
Sandwich ELISA

Range:
78.1-5000 pg/mL (Sandwich ELISA)

Recommended Dilutions:
It is recommended that this reagent should be titrated in each testing system to obtain optimal results.

Product Information

MP00973-2 targets MRP3/ABCC3 in immunoassays as a matched antibody pair. Validated in Sandwich ELISA.

Capture antibody: MRP3/ABCC3 Recombinant antibody, PBS Only (Capture) 84057-1-PBS (241209B9). 100 µg. Concentration 1 mg/mL.

Detection antibody: MRP3/ABCC3 Recombinant antibody, PBS Only (Detector) 84057-3-PBS (241209D1). 100 µg. Concentration 1 mg/mL.

Unconjugated rabbit recombinant monoclonal antibody pair in PBS only storage buffer at a concentration of 1 mg/mL, ready for conjugation. Created using Proteintech's proprietary in-house recombinant technology. Recombinant production enables unrivalled batch-to-batch consistency, easy scale-up, and future security of supply.

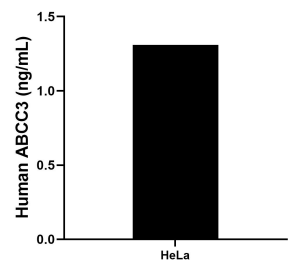
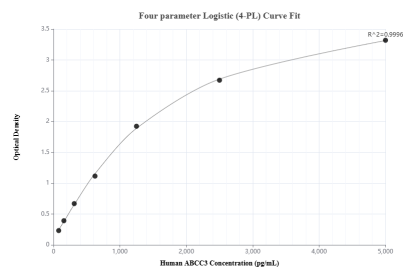
Matched antibody pairs are designed for use in a variety of assays and platforms that require matched antibody pairs.

Antibody use should be optimized for each application and assay.

Storage

Storage:
Store at -80°C.
The product is shipped with ice packs. Upon receipt, store it immediately at -80°C
Storage buffer:
PBS only

Selected Validation Data



Sandwich ELISA standard curve of MP00973-2, Human MRP3/ABCC3 Recombinant Matched Antibody Pair - PBS only. 84057-1-PBS was coated to a plate as the capture antibody and incubated with serial dilutions of standard Ag19786. 84057-3-PBS was HRP conjugated as the detection antibody. Range: 78.1-5000 pg/mL

The mean MRP3/ABCC3 concentration was determined to be 1.31 ng/mL in HeLa cell extract based on a 2.0 mg/mL extract load.