

# KIF5A Recombinant Matched Antibody Pair, PBS Only

Catalog Number: **MP00967-4**

## Capture Antibody Information

<b>Catalog Number:</b> 84013-3-PBS	<b>Clone ID:</b> 241124F12	<b>Conjugate:</b> Unconjugated
<b>Host:</b> Rabbit	<b>Reactivity:</b> human	<b>Full name:</b> kinesin family member 5A
<b>Isotype:</b> IgG	<b>GenBank:</b> BC146670	<b>Gene ID:</b> 3798
<b>Purification Method:</b> Protein A purification	<b>Immunogen Catalog Number:</b> Ag15518	

## Detection Antibody Information

<b>Catalog Number:</b> 84013-6-PBS	<b>Clone ID:</b> 241124G5	<b>Conjugate:</b> Unconjugated
<b>Host:</b> Rabbit	<b>Reactivity:</b> human	<b>Full name:</b> kinesin family member 5A
<b>Isotype:</b> IgG	<b>GenBank:</b> BC146670	<b>Gene ID:</b> 3798
<b>Purification Method:</b> Protein A purification	<b>Immunogen Catalog Number:</b> Ag15518	

## Applications

<b>Tested Applications:</b> Sandwich ELISA	<b>Range:</b> 0.313-20 ng/mL (Sandwich ELISA)	<b>Recommended Dilutions:</b> It is recommended that this reagent should be titrated in each testing system to obtain optimal results.
---	--	---

## Product Information

MP00967-4 targets KIF5A in immunoassays as a matched antibody pair. Validated in Sandwich ELISA.

Capture antibody: KIF5A Recombinant antibody, PBS Only (Capture/Detector) 84013-3-PBS (241124F12). 100 µg. Concentration 1 mg/mL.

Detection antibody: KIF5A Recombinant antibody, PBS Only (Detector) 84013-6-PBS (241124G5). 100 µg. Concentration 1 mg/mL.

Unconjugated rabbit recombinant monoclonal antibody pair in PBS only storage buffer at a concentration of 1 mg/mL, ready for conjugation. Created using Proteintech's proprietary in-house recombinant technology. Recombinant production enables unrivalled batch-to-batch consistency, easy scale-up, and future security of supply.

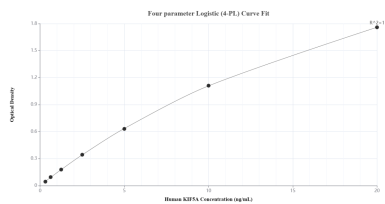
Matched antibody pairs are designed for use in a variety of assays and platforms that require matched antibody pairs.

Antibody use should be optimized for each application and assay.

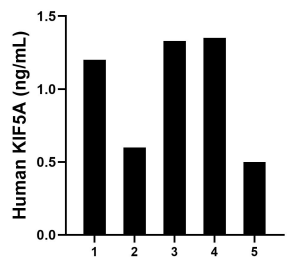
## Storage

**Storage:**  
Store at -80°C.  
**The product is shipped with ice packs. Upon receipt, store it immediately at -80°C**  
**Storage buffer:**  
PBS only

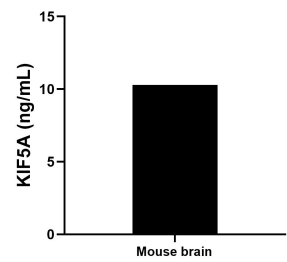
## Selected Validation Data



Sandwich ELISA standard curve of MP00967-4, Human KIF5A Recombinant Matched Antibody Pair - PBS only. 84013-3-PBS was coated to a plate as the capture antibody and incubated with serial dilutions of standard Ag15518. 84013-6-PBS was HRP conjugated as the detection antibody. Range: 0.313-20 ng/mL.



Serum of five individual healthy human donors was measured. The KIF5A concentration of detected samples was determined to be 1.00 ng/mL with a range of 0.50 - 1.35 ng/mL.



The mean KIF5A concentration was determined to be 10.30 ng/mL in mouse brain tissue extract based on a 4.60 mg/mL extract load.