

# BCAM Recombinant Matched Antibody Pair, PBS Only

Catalog Number: MP00965-2

## Capture Antibody Information

Catalog Number:  
84038-1-PBS  
Host:  
Rabbit  
Isotype:  
IgG  
Purification Method:  
Protein A purification

Clone ID:  
241051D5  
Reactivity:  
human  
GenBank:  
BC050450  
Immunogen Catalog Number:  
Ag28181

Conjugate:  
Unconjugated  
Full name:  
basal cell adhesion molecule  
(Lutheran blood group)  
Gene ID:  
4059

## Detection Antibody Information

Catalog Number:  
84038-4-PBS  
Host:  
Rabbit  
Isotype:  
IgG  
Purification Method:  
Protein A purification

Clone ID:  
241051F8  
Reactivity:  
human  
GenBank:  
BC050450  
Immunogen Catalog Number:  
Ag28181

Conjugate:  
Unconjugated  
Full name:  
basal cell adhesion molecule  
(Lutheran blood group)  
Gene ID:  
4059

## Applications

Tested Applications:  
Sandwich ELISA

Range:  
0.391-25 ng/mL (Sandwich ELISA)

Recommended Dilutions:  
It is recommended that this reagent should be titrated in each testing system to obtain optimal results.

## Product Information

MP00965-2 targets BCAM in immunoassays as a matched antibody pair. Validated in Sandwich ELISA.

Capture antibody: BCAM Recombinant antibody, PBS Only (Capture) 84038-1-PBS (241051D5). 100 µg. Concentration 1 mg/mL.

Detection antibody: BCAM Recombinant antibody, PBS Only (Detector) 84038-4-PBS (241051F8). 100 µg. Concentration 1 mg/mL.

Unconjugated rabbit recombinant monoclonal antibody pair in PBS only storage buffer at a concentration of 1 mg/mL, ready for conjugation. Created using Proteintech's proprietary in-house recombinant technology. Recombinant production enables unrivalled batch-to-batch consistency, easy scale-up, and future security of supply.

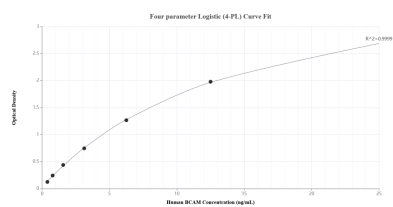
Matched antibody pairs are designed for use in a variety of assays and platforms that require matched antibody pairs.

Antibody use should be optimized for each application and assay.

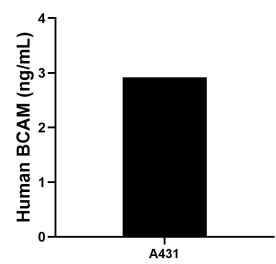
## Storage

Storage:  
Store at -80°C.  
The product is shipped with ice packs. Upon receipt, store it immediately at -80°C  
Storage buffer:  
PBS only

## Selected Validation Data



Sandwich ELISA standard curve of MP00965-2, Human BCAM Recombinant Matched Antibody Pair - PBS only. 84038-1-PBS was coated to a plate as the capture antibody and incubated with serial dilutions of standard Ag28181. 84038-4-PBS was HRP conjugated as the detection antibody. Range: 0.391-25 ng/mL.



The mean BCAM concentration was determined to be 2.92 ng/mL in A431 cell extract based on a 1.50 mg/mL extract load.