

SP100 Recombinant Matched Antibody Pair, PBS Only

Catalog Number: **MP00964-4**

Capture Antibody Information

Catalog Number: 84012-6-PBS	Clone ID: 241153H1	Conjugate: Unconjugated
Host: Rabbit	Reactivity: human	Full name: SP100 nuclear antigen
Isotype: IgG	GenBank: BC011562	Gene ID: 6672
Purification Method: Protein A purification	Immunogen Catalog Number: Ag35193	

Detection Antibody Information

Catalog Number: 84012-1-PBS	Clone ID: 241153B4	Conjugate: Unconjugated
Host: Rabbit	Reactivity: human	Full name: SP100 nuclear antigen
Isotype: IgG	GenBank: BC011562	Gene ID: 6672
Purification Method: Protein A purification	Immunogen Catalog Number: Ag35193	

Applications

Tested Applications: Sandwich ELISA	Range: 19.5-1250 pg/mL (Sandwich ELISA)	Recommended Dilutions: It is recommended that this reagent should be titrated in each testing system to obtain optimal results.
--	--	--

Product Information

MP00964-4 targets SP100 in immunoassays as a matched antibody pair. Validated in Sandwich ELISA.

Capture antibody: SP100 Recombinant antibody, PBS Only (Capture) 84012-6-PBS (241153H1). 100 µg. Concentration 1 mg/mL.

Detection antibody: SP100 Recombinant antibody, PBS Only (Detector) 84012-1-PBS (241153B4). 100 µg. Concentration 1 mg/mL.

Unconjugated rabbit recombinant monoclonal antibody pair in PBS only storage buffer at a concentration of 1 mg/mL, ready for conjugation. Created using Proteintech's proprietary in-house recombinant technology. Recombinant production enables unrivalled batch-to-batch consistency, easy scale-up, and future security of supply.

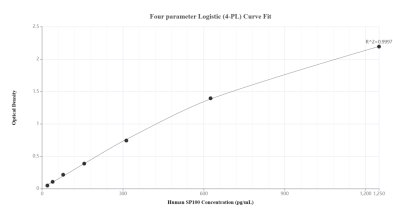
Matched antibody pairs are designed for use in a variety of assays and platforms that require matched antibody pairs.

Antibody use should be optimized for each application and assay.

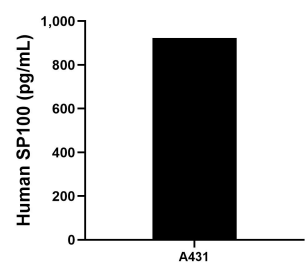
Storage

Storage:
Store at -80°C.
The product is shipped with ice packs. Upon receipt, store it immediately at -80°C
Storage buffer:
PBS only

Selected Validation Data



Sandwich ELISA standard curve of MP00964-4, Human SP100 Recombinant Matched Antibody Pair - PBS only. 84012-6-PBS was coated to a plate as the capture antibody and incubated with serial dilutions of standard Ag35193. 84012-1-PBS was HRP conjugated as the detection antibody. Range: 19.5-1250 pg/mL.



The mean SP100 concentration was determined to be 922.7 pg/mL in A431 cell extract based on a 1.5 mg/mL extract load.