

Siglec-8 Recombinant Matched Antibody Pair, PBS Only

Catalog Number: MP00960-2

Capture Antibody Information

Catalog Number:

84026-1-PBS

Host:

Rabbit

Isotype:

IgG

Purification Method:

Protein A purification

Clone ID:

241275D7

Reactivity:

human

GenBank:

BC053319

Conjugate:

Unconjugated

Full name:

sialic acid binding Ig-like lectin 8

Gene ID:

27181

Detection Antibody Information

Catalog Number:

84026-4-PBS

Host:

Rabbit

Isotype:

IgG

Purification Method:

Protein A purification

Clone ID:

241276C1

Reactivity:

human

GenBank:

BC053319

Conjugate:

Unconjugated

Full name:

sialic acid binding Ig-like lectin 8

Gene ID:

27181

Applications

Tested Applications:

Cytometric bead array

Range:

0.313-40 ng/mL (Cytometric Bead Array)

Recommended Dilutions:

It is recommended that this reagent should be titrated in each testing system to obtain optimal results.

Product Information

MP00960-2 targets Siglec-8 in immunoassays as a matched antibody pair. Validated in Cytometric bead array.

Capture antibody: Siglec-8 Recombinant antibody, PBS Only (Capture/Detector) 84026-1-PBS (241275D7). 100 μ g. Concentration 1 mg/mL.Detection antibody: Siglec-8 Recombinant antibody, PBS Only (Detector) 84026-4-PBS (241276C1). 100 μ g. Concentration 1 mg/mL.

Alternative Siglec-8 matched antibody pairs: MP00960-1, MP00960-3, MP00960-4

Unconjugated rabbit recombinant monoclonal antibody pair in PBS only storage buffer at a concentration of 1 mg/mL, ready for conjugation. Created using Proteintech's proprietary in-house recombinant technology. Recombinant production enables unrivalled batch-to-batch consistency, easy scale-up, and future security of supply.

Matched antibody pairs are designed for use in a variety of assays and platforms that require matched antibody pairs.

Antibody use should be optimized for each application and assay.

Storage

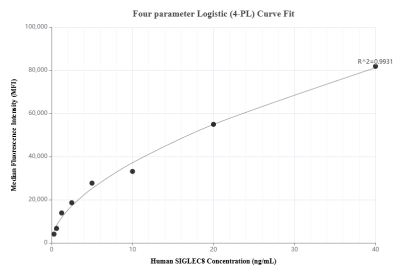
Storage:

Store at -80°C.

The product is shipped with ice packs. Upon receipt, store it immediately at -80°C**Storage buffer:**

PBS only

Selected Validation Data



Cytometric bead array standard curve of MP00960-2, SIGLEC8 Recombinant Matched Antibody Pair, PBS Only. Capture antibody: 84026-1-PBS. Detection antibody: 84026-4-PBS. Standard: RP02311. Range: 0.313-40 ng/mL.