

# Mouse CTLA-4/CD152 Recombinant Matched Antibody Pair, PBS Only

Catalog Number: **MP00907-4**

## Capture Antibody Information

**Catalog Number:**  
83995-3-PBS  
**Host:**  
Rabbit  
**Isotype:**  
IgG  
**Purification Method:**  
Protein A purification

**Clone ID:**  
241100C6  
**Reactivity:**  
mouse  
**GenBank:**  
NM\_009843.4  
**Immunogen Catalog Number:**  
Eg0632

**Conjugate:**  
Unconjugated  
**Full name:**  
cytotoxic T-lymphocyte-associated protein 4  
**Gene ID:**  
12477

## Detection Antibody Information

**Catalog Number:**  
83995-5-PBS  
**Host:**  
Rabbit  
**Isotype:**  
IgG  
**Purification Method:**  
Protein A purification

**Clone ID:**  
241100C10  
**Reactivity:**  
mouse  
**GenBank:**  
NM\_009843.4  
**Immunogen Catalog Number:**  
Eg0632

**Conjugate:**  
Unconjugated  
**Full name:**  
cytotoxic T-lymphocyte-associated protein 4  
**Gene ID:**  
12477

## Applications

**Tested Applications:**  
Sandwich ELISA

**Range:**  
15.6-1000 pg/mL (Sandwich ELISA)

**Recommended Dilutions:**  
It is recommended that this reagent should be titrated in each testing system to obtain optimal results.

## Product Information

MP00907-4 targets CTLA-4/CD152 in immunoassays as a matched antibody pair. Validated in Sandwich ELISA.

Capture antibody: Mouse CTLA-4/CD152 Recombinant antibody, PBS Only (Capture) 83995-3-PBS (241100C6). 100 µg. Concentration 1 mg/mL.

Detection antibody: Mouse CTLA-4/CD152 Recombinant antibody, PBS Only (Detector) 83995-5-PBS (241100C10). 100 µg. Concentration 1 mg/mL.

Unconjugated rabbit recombinant monoclonal antibody pair in PBS only storage buffer at a concentration of 1 mg/mL, ready for conjugation. Created using Proteintech's proprietary in-house recombinant technology. Recombinant production enables unrivalled batch-to-batch consistency, easy scale-up, and future security of supply.

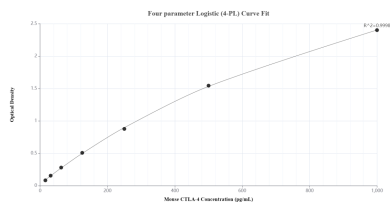
Matched antibody pairs are designed for use in a variety of assays and platforms that require matched antibody pairs.

Antibody use should be optimized for each application and assay.

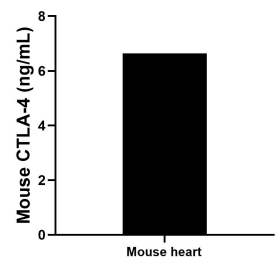
## Storage

**Storage:**  
Store at -80°C.  
**The product is shipped with ice packs. Upon receipt, store it immediately at -80°C**  
**Storage buffer:**  
PBS only

## Selected Validation Data



Sandwich ELISA standard curve of MP00907-4, Mouse CTLA-4/CD152 Recombinant Matched Antibody Pair - PBS only. 83995-3-PBS was coated to a plate as the capture antibody and incubated with serial dilutions of standard Eg0632. 83995-5-PBS was HRP conjugated as the detection antibody. Range: 15.6-1000 pg/mL



The mean CTLA-4/CD152 concentration was determined to be 6.64 ng/mL in mouse heart tissue extract based on a 1.20 mg/mL extract load.