

ATG4D Recombinant Matched Antibody Pair, PBS Only

Catalog Number: MP00902-4

Capture Antibody Information

Catalog Number: 83951-5-PBS	Clone ID: 241035A4	Conjugate: Unconjugated
Host: Rabbit	Reactivity: human	Full name: ATG4 autophagy related 4 homolog D (S. cerevisiae)
Isotype: IgG	GenBank: BC068992	Gene ID: 84971
Purification Method: Protein A purification	Immunogen Catalog Number: Ag10177	

Detection Antibody Information

Catalog Number: 83951-3-PBS	Clone ID: 241035E10	Conjugate: Unconjugated
Host: Rabbit	Reactivity: human	Full name: ATG4 autophagy related 4 homolog D (S. cerevisiae)
Isotype: IgG	GenBank: BC068992	Gene ID: 84971
Purification Method: Protein A purification	Immunogen Catalog Number: Ag10177	

Applications

Tested Applications: Sandwich ELISA	Range: 0.781-50 ng/mL (Sandwich ELISA)	Recommended Dilutions: It is recommended that this reagent should be titrated in each testing system to obtain optimal results.
---	--	---

Product Information

MP00902-4 targets ATG4D in immunoassays as a matched antibody pair. Validated in Sandwich ELISA.

Capture antibody: ATG4D Recombinant antibody, PBS Only (Capture) 83951-5-PBS (241035A4). 100 µg. Concentration 1 mg/mL.

Detection antibody: ATG4D Recombinant antibody, PBS Only (Detector) 83951-3-PBS (241035E10). 100 µg. Concentration 1 mg/mL.

Unconjugated rabbit recombinant monoclonal antibody pair in PBS only storage buffer at a concentration of 1 mg/mL, ready for conjugation. Created using Proteintech's proprietary in-house recombinant technology. Recombinant production enables unrivalled batch-to-batch consistency, easy scale-up, and future security of supply.

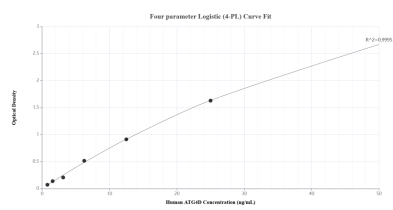
Matched antibody pairs are designed for use in a variety of assays and platforms that require matched antibody pairs.

Antibody use should be optimized for each application and assay.

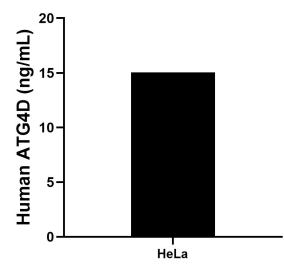
Storage

Storage:
Store at -80°C.
The product is shipped with ice packs. Upon receipt, store it immediately at -80°C
Storage buffer:
PBS only

Selected Validation Data



Sandwich ELISA standard curve of MP00902-4, Human ATG4D Recombinant Matched Antibody Pair - PBS only. 83951-5-PBS was coated to a plate as the capture antibody and incubated with serial dilutions of standard Ag10177. 83951-3-PBS was HRP conjugated as the detection antibody. Range: 0.781-50 ng/mL.



The mean ATG4D concentration was determined to be 15.05 ng/mL in HeLa cell extract based on a 1.30 mg/mL extract load.