

B7-H6 Recombinant Matched Antibody Pair, PBS Only

Catalog Number: **MP00851-2**

Capture Antibody Information

Catalog Number:
83908-1-PBS
Host:
Rabbit
Isotype:
IgG
Purification Method:
Protein A purification

Clone ID:
240808C5
Reactivity:
human
GenBank:
BC136800

Conjugate:
Unconjugated
Full name:
hypothetical protein
DKFZp686O24166
Gene ID:
374383

Detection Antibody Information

Catalog Number:
83908-5-PBS
Host:
Rabbit
Isotype:
IgG
Purification Method:
Protein A purification

Clone ID:
240808F3
Reactivity:
human
GenBank:
BC136800

Conjugate:
Unconjugated
Full name:
hypothetical protein
DKFZp686O24166
Gene ID:
374383

Applications

Tested Applications:
Sandwich ELISA

Range:
62.5-4000 pg/mL (Sandwich ELISA)

Recommended Dilutions:
It is recommended that this reagent should be titrated in each testing system to obtain optimal results.

Product Information

MP00851-2 targets B7-H6 in immunoassays as a matched antibody pair. Validated in Sandwich ELISA.

Capture antibody: B7-H6 Recombinant antibody, PBS Only (Capture) 83908-1-PBS (240808C5). 100 µg. Concentration 1 mg/mL.

Detection antibody: B7-H6 Recombinant antibody, PBS Only (Detector) 83908-5-PBS (240808F3). 100 µg. Concentration 1 mg/mL.

Unconjugated rabbit recombinant monoclonal antibody pair in PBS only storage buffer at a concentration of 1 mg/mL, ready for conjugation. Created using Proteintech's proprietary in-house recombinant technology. Recombinant production enables unrivalled batch-to-batch consistency, easy scale-up, and future security of supply.

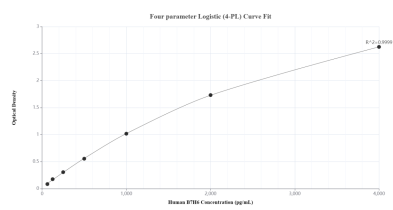
Matched antibody pairs are designed for use in a variety of assays and platforms that require matched antibody pairs.

Antibody use should be optimized for each application and assay.

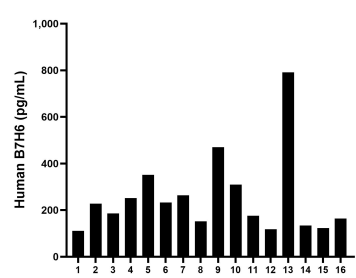
Storage

Storage:
Store at -80°C.
The product is shipped with ice packs. Upon receipt, store it immediately at -80°C
Storage buffer:
PBS only

Selected Validation Data



Sandwich ELISA standard curve of MP00851-2, Human B7-H6 Recombinant Matched Antibody Pair - PBS only. 83908-1-PBS was coated to a plate as the capture antibody and incubated with serial dilutions of standard Eg0007. 83908-5-PBS was HRP conjugated as the detection antibody. Range: 62.5-4000 pg/mL.



Serum of sixteen individual healthy human donors was measured. The B7-H6 concentration of detected samples was determined to be 253.6 pg/mL with a range of 110.6 - 790.9 pg/mL.