

# Mouse PD-L1/CD274 Recombinant Matched Antibody Pair, PBS Only

Catalog Number: **MP00844-2**

## Capture Antibody Information

**Catalog Number:**  
83906-4-PBS  
**Host:**  
Rabbit  
**Isotype:**  
IgG  
**Purification Method:**  
Protein A purification

**Clone ID:**  
240993H1  
**Reactivity:**  
mouse  
**GenBank:**  
NM\_021893.3

**Conjugate:**  
Unconjugated  
**Full name:**  
CD274 antigen  
**Gene ID:**  
60533

## Detection Antibody Information

**Catalog Number:**  
83906-1-PBS  
**Host:**  
Rabbit  
**Isotype:**  
IgG  
**Purification Method:**  
Protein A purification

**Clone ID:**  
240993E1  
**Reactivity:**  
mouse  
**GenBank:**  
NM\_021893.3

**Conjugate:**  
Unconjugated  
**Full name:**  
CD274 antigen  
**Gene ID:**  
60533

## Applications

**Tested Applications:**  
Cytometric bead array, Sandwich ELISA

**Range:**  
0.313-40 ng/mL (Cytometric Bead Array)  
4.69-300 pg/mL (Sandwich ELISA)

**Recommended Dilutions:**  
It is recommended that this reagent should be titrated in each testing system to obtain optimal results.

## Product Information

MP00844-2 targets PD-L1/CD274 in immunoassays as a matched antibody pair. Validated in Cytometric bead array, Sandwich ELISA.

Capture antibody: Mouse PD-L1/CD274 Recombinant antibody, PBS Only (Capture) 83906-4-PBS (240993H1). 100 µg. Concentration 1 mg/mL.

Detection antibody: Mouse PD-L1/CD274 Recombinant antibody, PBS Only (Detector) 83906-1-PBS (240993E1). 100 µg. Concentration 1 mg/mL.

Unconjugated rabbit recombinant monoclonal antibody pair in PBS only storage buffer at a concentration of 1 mg/mL, ready for conjugation. Created using Proteintech's proprietary in-house recombinant technology. Recombinant production enables unrivalled batch-to-batch consistency, easy scale-up, and future security of supply.

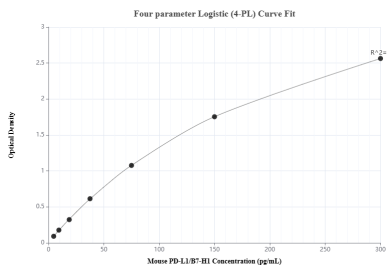
Matched antibody pairs are designed for use in a variety of assays and platforms that require matched antibody pairs.

Antibody use should be optimized for each application and assay.

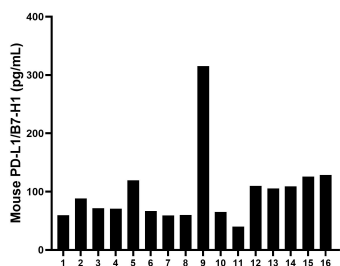
## Storage

**Storage:**  
Store at -80°C.  
**The product is shipped with ice packs. Upon receipt, store it immediately at -80°C**  
**Storage buffer:**  
PBS only

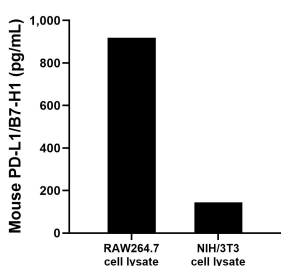
## Selected Validation Data



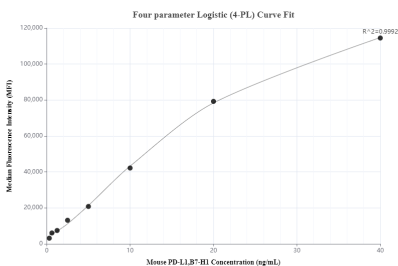
Sandwich ELISA standard curve of MP00844-2, Mouse PD-L1/CD274 Recombinant Matched Antibody Pair - PBS only. 83906-4-PBS was coated to a plate as the capture antibody and incubated with serial dilutions of standard Eg0986. 83906-1-PBS was HRP conjugated as the detection antibody. Range: 4.69-300 pg/mL



Serum of sixteen individual healthy human donors was measured. The mouse PD-L1/CD274 concentration of detected samples was determined to be 99.6 pg/mL with a range of 40.12 - 315.13 pg/mL



RAW264.7 and NIH/3T3 cell lysate were measured. The mouse PD-L1/CD274 concentration was determined to be 918.7 pg/mL in RAW264.7 cell lysate (based on a 4.8 mg/mL extract load) and 144.6 pg/mL in NIH/3T3 cell lysate (based on a 10.6 mg/mL extract load).



Cytometric bead array standard curve of MP00844-2, MOUSE PD-L1/CD274 Recombinant Matched Antibody Pair, PBS Only. Capture antibody: 83906-4-PBS. Detection antibody: 83906-1-PBS. Standard: Eg0986. Range: 0.313-40 ng/mL