

For Research Use Only

# Mouse CD200R1 Recombinant Matched Antibody Pair, PBS Only



Catalog Number:MP00835-3

## Capture Antibody Information

**Catalog Number:**  
83889-9-PBS  
**Host:**  
Rabbit  
**Isotype:**  
IgG  
**Purification Method:**  
Protein A purification

**Clone ID:**  
252758D6  
**Reactivity:**  
mouse  
**GenBank:**  
NM\_021325.3  
**Immunogen Catalog Number:**  
Eg0988

**Conjugate:**  
Unconjugated  
**Full name:**  
CD200 receptor 1  
**Gene ID:**  
57781

## Detection Antibody Information

**Catalog Number:**  
83889-8-PBS  
**Host:**  
Rabbit  
**Isotype:**  
IgG  
**Purification Method:**  
Protein A purification

**Clone ID:**  
252758G1  
**Reactivity:**  
mouse  
**GenBank:**  
NM\_021325.3  
**Immunogen Catalog Number:**  
Eg0988

**Conjugate:**  
Unconjugated  
**Full name:**  
CD200 receptor 1  
**Gene ID:**  
57781

## Applications

**Tested Applications:**  
Cytometric bead array

**Range:**  
0.078-10 ng/mL (Cytometric Bead Array)

**Recommended Dilutions:**  
It is recommended that this reagent should be titrated in each testing system to obtain optimal results.

## Product Information

MP00835-3 targets CD200R1 in immunoassays as a matched antibody pair. Validated in Cytometric bead array.

Capture antibody: Mouse CD200R1 Recombinant monoclonal antibody, PBS Only (Capture) 83889-9-PBS (252758D6). 100  $\mu$ g. Concentration 1 mg/mL.

Detection antibody: Mouse CD200R1 Recombinant monoclonal antibody, PBS Only (Detector) 83889-8-PBS (252758G1). 100  $\mu$ g. Concentration 1 mg/mL.

Unconjugated rabbit recombinant monoclonal antibody pair in PBS only storage buffer at a concentration of 1 mg/mL, ready for conjugation. Created using Proteintech's proprietary in-house recombinant technology. Recombinant production enables unrivalled batch-to-batch consistency, easy scale-up, and future security of supply.

Matched antibody pairs are designed for use in a variety of assays and platforms that require matched antibody pairs.

Antibody use should be optimized for each application and assay.

## Storage

**Storage:**  
Store at -80°C.  
**The product is shipped with ice packs. Upon receipt, store it immediately at -80°C**  
**Storage buffer:**  
PBS only

For technical support and original validation data for this product please contact:

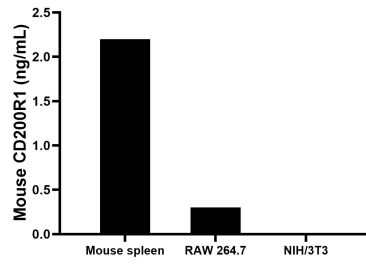
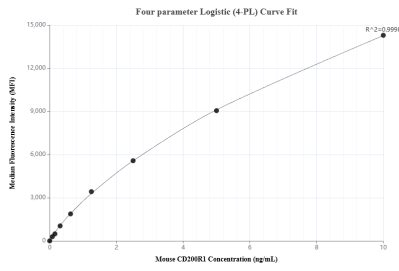
T: 4006900926

E: [Proteintech-CN@ptglab.com](mailto:Proteintech-CN@ptglab.com)

W: [ptgcn.com](http://ptgcn.com)

**This product is exclusively available under Proteintech Group brand and is not available to purchase from any other manufacturer.**

## Selected Validation Data



Cytometric bead array standard curve of MP00835-3, MOUSE CD200R1 Recombinant Matched Antibody Pair, PBS Only. Capture antibody: 83889-9-PBS. Detection antibody: 83889-8-PBS. Standard: Eg0988. Range: 0.078-10 ng/mL

The mean CD200R1 concentration was determined to be 2.2 ng/mL in mouse spleen tissue extract based on a 1.2 mg/mL extract load, 0.3 ng/mL in RAW 264.7 cell extract based on a 1.2 mg/mL extract load, NIH/3T3 cell extract were served as a negative control.