

S1PR2 Recombinant Matched Antibody Pair, PBS Only

Catalog Number: MP00831-1

Capture Antibody Information

Catalog Number:
83881-2-PBS
Host:
Rabbit
Isotype:
IgG
Purification Method:
Protein A purification

Clone ID:
241067H8
Reactivity:
human
GenBank:
BC069598
Immunogen Catalog Number:
Ag15470

Conjugate:
Unconjugated
Full name:
sphingosine-1-phosphate receptor 2
Gene ID:
9294

Detection Antibody Information

Catalog Number:
83881-1-PBS
Host:
Rabbit
Isotype:
IgG
Purification Method:
Protein A purification

Clone ID:
241067B10
Reactivity:
human
GenBank:
BC069598
Immunogen Catalog Number:
Ag15470

Conjugate:
Unconjugated
Full name:
sphingosine-1-phosphate receptor 2
Gene ID:
9294

Applications

Tested Applications:
Cytometric bead array, Sandwich
ELISA

Range:
3.125-100 ng/mL (Cytometric Bead
Array)
1.56-100 ng/mL (Sandwich ELISA)

Recommended Dilutions:
It is recommended that this reagent
should be titrated in each testing
system to obtain optimal results.

Product Information

MP00831-1 targets S1PR2 in immunoassays as a matched antibody pair. Validated in Cytometric bead array, Sandwich ELISA.

Capture antibody: S1PR2 Recombinant antibody, PBS Only (Capture) 83881-2-PBS (241067H8). 100 µg.
Concentration 1 mg/mL.

Detection antibody: S1PR2 Recombinant antibody, PBS Only (Detector) 83881-1-PBS (241067B10). 100 µg.
Concentration 1 mg/mL.

Unconjugated rabbit recombinant monoclonal antibody pair in PBS only storage buffer at a concentration of 1 mg/mL, ready for conjugation. Created using Proteintech's proprietary in-house recombinant technology. Recombinant production enables unrivalled batch-to-batch consistency, easy scale-up, and future security of supply.

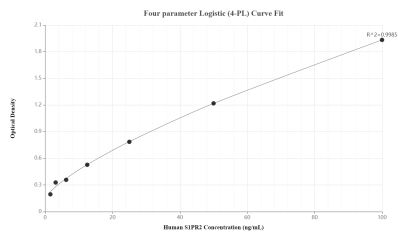
Matched antibody pairs are designed for use in a variety of assays and platforms that require matched antibody pairs.

Antibody use should be optimized for each application and assay.

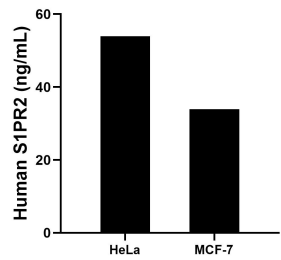
Storage

Storage:
Store at -80°C.
The product is shipped with ice packs. Upon receipt, store it immediately at -80°C
Storage buffer:
PBS only

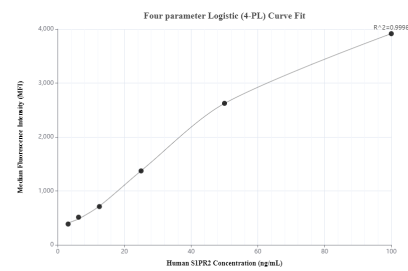
Selected Validation Data



Sandwich ELISA standard curve of MP00831-1, Human S1PR2 Recombinant Matched Antibody Pair - PBS only. 83881-2-PBS was coated to a plate as the capture antibody and incubated with serial dilutions of standard Ag15470. 83881-1-PBS was HRP conjugated as the detection antibody. Range: 1.56-100 ng/mL.



The mean S1PR2 concentration was determined to be 53.98 ng/mL in HeLa cell extract based on a 1.20 mg/mL extract load and 33.91 ng/mL in MCF-7 cell extract based on a 1.20 mg/mL extract load.



Cytometric bead array standard curve of MP00831-1, S1PR2 Recombinant Matched Antibody Pair, PBS Only. Capture antibody: 83881-2-PBS. Detection antibody: 83881-1-PBS. Standard: Ag15470. Range: 3.125-100 ng/mL.