

# IL-4 Recombinant Matched Antibody Pair, PBS Only

Catalog Number: MP00829-3

## Capture Antibody Information

Catalog Number:  
83894-2-PBS  
Host:  
Rabbit  
Isotype:  
IgG  
Purification Method:  
Protein A purification

Clone ID:  
240794D7  
Reactivity:  
human  
GenBank:  
BC070123  
Immunogen Catalog Number:  
Eg0104

Conjugate:  
Unconjugated  
Full name:  
interleukin 4  
Gene ID:  
3565

## Detection Antibody Information

Catalog Number:  
83894-5-PBS  
Host:  
Rabbit  
Isotype:  
IgG  
Purification Method:  
Protein A purification

Clone ID:  
240794H7  
Reactivity:  
human  
GenBank:  
BC070123  
Immunogen Catalog Number:  
Eg0104

Conjugate:  
Unconjugated  
Full name:  
interleukin 4  
Gene ID:  
3565

## Applications

Tested Applications:  
Cytometric bead array, Sandwich  
ELISA

Range:  
0.625-40 ng/mL (Cytometric Bead  
Array)  
15.6-1000 pg/mL (Sandwich ELISA)

Recommended Dilutions:  
It is recommended that this reagent  
should be titrated in each testing  
system to obtain optimal results.

## Product Information

MP00829-3 targets IL-4 in immunoassays as a matched antibody pair. Validated in Cytometric bead array, Sandwich ELISA.

Capture antibody: IL-4 Recombinant antibody, PBS Only (Capture) 83894-2-PBS (240794D7). 100 µg. Concentration 1 mg/mL.

Detection antibody: IL-4 Recombinant antibody, PBS Only (Detector) 83894-5-PBS (240794H7). 100 µg. Concentration 1 mg/mL.

Unconjugated rabbit recombinant monoclonal antibody pair in PBS only storage buffer at a concentration of 1 mg/mL, ready for conjugation. Created using Proteintech's proprietary in-house recombinant technology. Recombinant production enables unrivalled batch-to-batch consistency, easy scale-up, and future security of supply.

Matched antibody pairs are designed for use in a variety of assays and platforms that require matched antibody pairs.

Antibody use should be optimized for each application and assay.

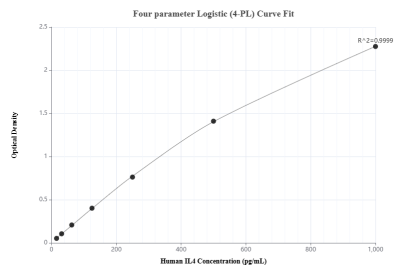
## Storage

Storage:  
Store at -80°C.

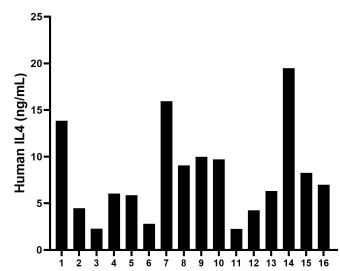
The product is shipped with ice packs. Upon receipt, store it immediately at -80°C

Storage buffer:  
PBS only

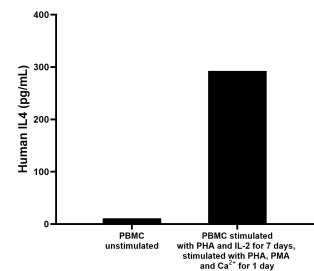
Selected Validation Data



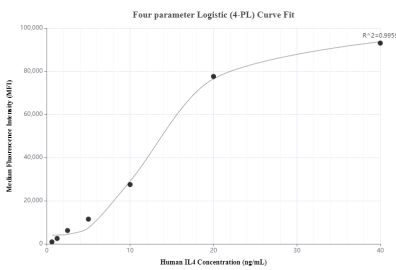
Sandwich ELISA standard curve of MP00829-3, Human IL-4 Recombinant Matched Antibody Pair - PBS only. 83894-2-PBS was coated to a plate as the capture antibody and incubated with serial dilutions of standard Eg0104. 83894-5-PBS was HRP conjugated as the detection antibody. Range: 15.6-1000 pg/mL



Serum of sixteen individual healthy human donors was measured. The human IL-4 concentration of detected samples was determined to be 7.97 pg/mL with a range of 2.25 - 19.49 pg/mL.



Human peripheral blood mononuclear cells ( $0.5 \times 10^6$  cells/mL) were cultured in RPMI supplemented with 10% fetal bovine serum, 5  $\mu$ g/mL PHA, and 10 ng/mL recombinant human IL-2. After 7 days of culture, cells were changed into DMEM with 10% fetal bovine serum, 10 ng/mL PMA, 1  $\mu$ g/mL Ca<sup>2+</sup> ionophore, and 5  $\mu$ g/mL PHA. Cell culture supernate was collected after 1d of stimulation and measured 292.5 pg/mL in stimulated PBMC supernatant, 11.2 pg/mL in



Cytometric bead array standard curve of MP00829-3, IL-4 Recombinant Matched Antibody Pair, PBS Only. Capture antibody: 83894-2-PBS. Detection antibody: 83894-5-PBS. Standard: Eg0104. Range: 0.625-40 ng/mL