

# Fibrillin 1 Recombinant Matched Antibody Pair, PBS Only

Catalog Number:MP00807-1

## Capture Antibody Information

**Catalog Number:**  
83836-2-PBS

**Host:**  
Rabbit

**Isotype:**  
IgG

**Purification Method:**  
Protein A purification

**Clone ID:**  
240960E11

**Reactivity:**  
human

**GenBank:**  
BC146854

**Immunogen Catalog Number:**  
Ag30283

**Conjugate:**  
Unconjugated

**Full name:**  
fibrillin 1

**Gene ID:**  
2200

## Detection Antibody Information

**Catalog Number:**  
83836-1-PBS

**Host:**  
Rabbit

**Isotype:**  
IgG

**Purification Method:**  
Protein A purification

**Clone ID:**  
240960E5

**Reactivity:**  
human

**GenBank:**  
BC146854

**Immunogen Catalog Number:**  
Ag30283

**Conjugate:**  
Unconjugated

**Full name:**  
fibrillin 1

**Gene ID:**  
2200

## Applications

**Tested Applications:**  
Cytometric bead array, Sandwich ELISA

**Range:**  
0.313-40 ng/mL (Cytometric Bead Array)  
62.5-4000 pg/mL (Sandwich ELISA)

**Recommended Dilutions:**  
It is recommended that this reagent should be titrated in each testing system to obtain optimal results.

## Product Information

MP00807-1 targets Fibrillin 1 in immunoassays as a matched antibody pair. Validated in Cytometric bead array, Sandwich ELISA.

Capture antibody: Fibrillin 1 Recombinant antibody, PBS Only (Capture) 83836-2-PBS (240960E11). 100 µg. Concentration 1 mg/mL.

Detection antibody: Fibrillin 1 Recombinant antibody, PBS Only (Detector) 83836-1-PBS (240960E5). 100 µg. Concentration 1 mg/mL.

Alternative Fibrillin 1 matched antibody pairs: MP00807-2

Unconjugated rabbit recombinant monoclonal antibody pair in PBS only storage buffer at a concentration of 1 mg/mL, ready for conjugation. Created using Proteintech's proprietary in-house recombinant technology. Recombinant production enables unrivalled batch-to-batch consistency, easy scale-up, and future security of supply.

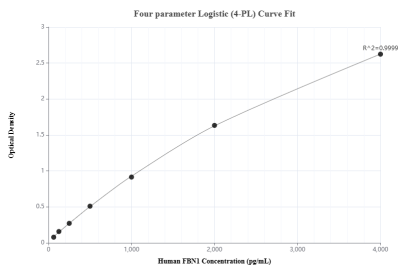
Matched antibody pairs are designed for use in a variety of assays and platforms that require matched antibody pairs.

Antibody use should be optimized for each application and assay.

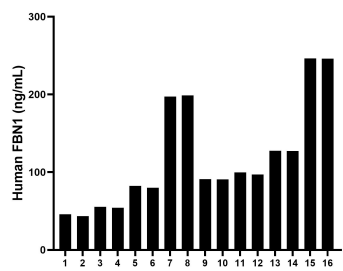
## Storage

**Storage:**  
Store at -80°C.  
**The product is shipped with ice packs. Upon receipt, store it immediately at -80°C**  
**Storage buffer:**  
PBS only

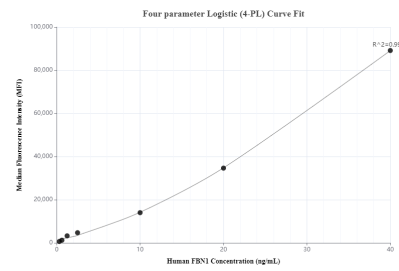
## Selected Validation Data



Sandwich ELISA standard curve of MP00807-1, Human Fibrillin 1/FBN1 Recombinant Matched Antibody Pair - PBS only. 83836-2-PBS was coated to a plate as the capture antibody and incubated with serial dilutions of standard Ag30283. 83836-1-PBS was HRP conjugated as the detection antibody. Range: 62.5-4000 pg/mL



Serum of sixteen individual healthy human donors was measured. The human Fibrillin 1/FBN1 concentration of detected samples was determined to be 117.73 ng/mL with a range of 43.48 - 246.44 ng/mL



Cytometric bead array standard curve of MP00807-1, Fibrillin 1/FBN1 Recombinant Matched Antibody Pair, PBS Only. Capture antibody: 83836-2-PBS. Detection antibody: 83836-1-PBS. Standard: Ag30283. Range: 0.313-40 ng/mL