

SOD1 Recombinant Matched Antibody Pair, PBS Only

Catalog Number: MP00799-1

Capture Antibody Information

Catalog Number:
83857-3-PBS

Host:
Rabbit

Isotype:
IgG

Purification Method:
Protein A purification

Clone ID:
240888F11

Reactivity:
human

GenBank:
NM_000454.5

Conjugate:
Unconjugated

Full name:
superoxide dismutase 1, soluble

Gene ID:
6647

Detection Antibody Information

Catalog Number:
83857-2-PBS

Host:
Rabbit

Isotype:
IgG

Purification Method:
Protein A purification

Clone ID:
240888A12

Reactivity:
human

GenBank:
NM_000454.5

Conjugate:
Unconjugated

Full name:
superoxide dismutase 1, soluble

Gene ID:
6647

Applications

Tested Applications:

Cytometric bead array, Sandwich ELISA

Range:

0.156-20 ng/mL (Cytometric Bead Array)
15.6-1000 pg/mL (Sandwich ELISA)

Recommended Dilutions:

It is recommended that this reagent should be titrated in each testing system to obtain optimal results.

Product Information

MP00799-1 targets SOD1 in immunoassays as a matched antibody pair. Validated in Cytometric bead array, Sandwich ELISA.

Capture antibody: SOD1 Recombinant antibody, PBS Only (Capture) 83857-3-PBS (240888F11). 100 µg. Concentration 1 mg/mL.

Detection antibody: SOD1 Recombinant antibody, PBS Only (Detector) 83857-2-PBS (240888A12). 100 µg. Concentration 1 mg/mL.

Alternative SOD1 matched antibody pairs: MP00799-2, MP00799-3, MP50052-1, MP50052-2

Unconjugated rabbit recombinant monoclonal antibody pair in PBS only storage buffer at a concentration of 1 mg/mL, ready for conjugation. Created using Proteintech's proprietary in-house recombinant technology. Recombinant production enables unrivalled batch-to-batch consistency, easy scale-up, and future security of supply.

Matched antibody pairs are designed for use in a variety of assays and platforms that require matched antibody pairs.

Antibody use should be optimized for each application and assay.

Storage

Storage:

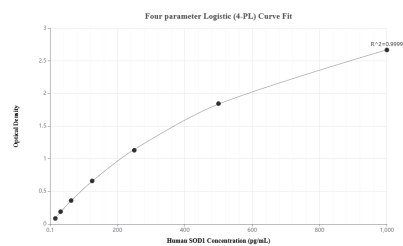
Store at -80°C.

The product is shipped with ice packs. Upon receipt, store it immediately at -80°C

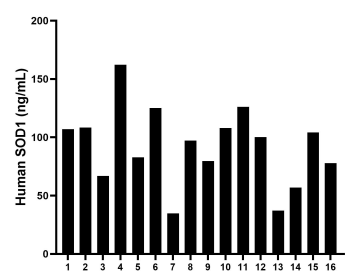
Storage buffer:

PBS only

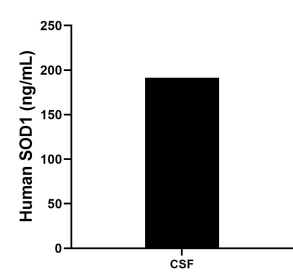
Selected Validation Data



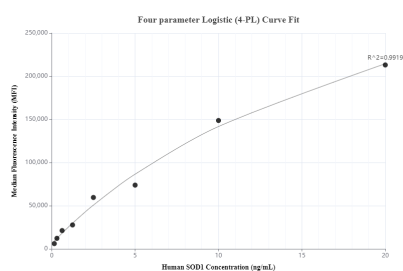
Sandwich ELISA standard curve of MP00799-1, Human SOD1 Recombinant Matched Antibody Pair - PBS only. 83857-3-PBS was coated to a plate as the capture antibody and incubated with serial dilutions of standard Eg1043. 83857-2-PBS was HRP conjugated as the detection antibody. Range: 15.6-1000 pg/mL



Serum of sixteen humans was measured. The human SOD1 concentration of detected samples was determined to be 92.2 ng/mL with a range of 34.8 - 162.3 ng/mL



The human SOD1 concentration in human cerebrospinal fluid was determined to be 191.6 ng/mL.



Cytometric bead array standard curve of MP00799-1, SOD1 Recombinant Matched Antibody Pair, PBS Only. Capture antibody: 83857-3-PBS. Detection antibody: 83857-2-PBS. Standard: Eg1043. Range: 0.156-20 ng/mL