

# CLCA1 Recombinant Matched Antibody Pair, PBS Only

Catalog Number: **MP00794-4**

## Capture Antibody Information

Catalog Number: 83829-1-PBS	Clone ID: 240941A11	Conjugate: Unconjugated
Host: Rabbit	Reactivity: human	Full name: chloride channel accessory 1
Isotype: IgG	GenBank: BC156805	Gene ID: 1179
Purification Method: Protein A purification	Immunogen Catalog Number: Ag18176	

## Detection Antibody Information

Catalog Number: 83829-6-PBS	Clone ID: 240941G9	Conjugate: Unconjugated
Host: Rabbit	Reactivity: human	Full name: chloride channel accessory 1
Isotype: IgG	GenBank: BC156805	Gene ID: 1179
Purification Method: Protein A purification	Immunogen Catalog Number: Ag18176	

## Applications

Tested Applications: Sandwich ELISA	Range: 0.625-40 ng/mL (Sandwich ELISA)	Recommended Dilutions: It is recommended that this reagent should be titrated in each testing system to obtain optimal results.
--	---	--

## Product Information

MP00794-4 targets CLCA1 in immunoassays as a matched antibody pair. Validated in Sandwich ELISA.

Capture antibody: CLCA1 Recombinant antibody, PBS Only (Capture/Detector) 83829-1-PBS (240941A11). 100 µg. Concentration 1 mg/mL.

Detection antibody: CLCA1 Recombinant antibody, PBS Only (Detector) 83829-6-PBS (240941G9). 100 µg. Concentration 1 mg/mL.

Unconjugated rabbit recombinant monoclonal antibody pair in PBS only storage buffer at a concentration of 1 mg/mL, ready for conjugation. Created using Proteintech's proprietary in-house recombinant technology. Recombinant production enables unrivalled batch-to-batch consistency, easy scale-up, and future security of supply.

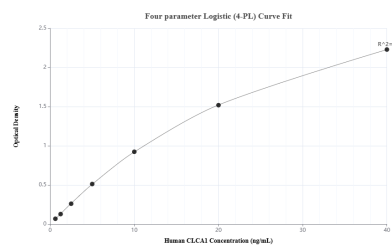
Matched antibody pairs are designed for use in a variety of assays and platforms that require matched antibody pairs.

Antibody use should be optimized for each application and assay.

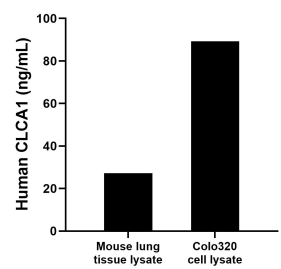
## Storage

Storage:  
Store at -80°C.  
**The product is shipped with ice packs. Upon receipt, store it immediately at -80°C**  
Storage buffer:  
PBS only

## Selected Validation Data



Sandwich ELISA standard curve of MP00794-4, Human CLCA1 Recombinant Matched Antibody Pair - PBS only. 83829-1-PBS was coated to a plate as the capture antibody and incubated with serial dilutions of standard Ag18176. 83829-6-PBS was HRP conjugated as the detection antibody. Range: 0.625-40 ng/mL



Mouse lung tissue lyaste and Colo320 cell lysate were measured. The human CLCA1 concentration of detected samples was determined to be 27.24 ng/mL (based on a 1.9 mg/mL extract load) in mouse lung tissue lyaste and 89.26 ng/mL (based on a 4.8 mg/mL extract load) in Colo320 cell lysate.