

# RPS17 Recombinant Matched Antibody Pair, PBS Only

Catalog Number: MP00785-1

## Capture Antibody Information

|  |                                     |                                     |
|--|-------------------------------------|-------------------------------------|
| Catalog Number:<br>83848-1-PBS                 | Clone ID:<br>240851B3               | Conjugate:<br>Unconjugated          |
| Host:<br>Rabbit                                | Reactivity:<br>human                | Full name:<br>ribosomal protein S17 |
| Isotype:<br>IgG                                | GenBank:<br>BC009407                | Gene ID:<br>6218                    |
| Purification Method:<br>Protein A purification | Immunogen Catalog Number:<br>Ag9334 |                                     |

## Detection Antibody Information

|  |                                     |                                     |
|--|-------------------------------------|-------------------------------------|
| Catalog Number:<br>83848-2-PBS                 | Clone ID:<br>240851D10              | Conjugate:<br>Unconjugated          |
| Host:<br>Rabbit                                | Reactivity:<br>human                | Full name:<br>ribosomal protein S17 |
| Isotype:<br>IgG                                | GenBank:<br>BC009407                | Gene ID:<br>6218                    |
| Purification Method:<br>Protein A purification | Immunogen Catalog Number:<br>Ag9334 |                                     |

## Applications

|   |   |  |
|---|---|--|
| Tested Applications:<br>Cytometric bead array, Sandwich ELISA | Range:<br>0.625-40 ng/mL (Cytometric Bead Array)<br>0.156-10 ng/mL (Sandwich ELISA) | Recommended Dilutions:<br>It is recommended that this reagent should be titrated in each testing system to obtain optimal results. |
|---|---|--|

## Product Information

MP00785-1 targets RPS17 in immunoassays as a matched antibody pair. Validated in Cytometric bead array, Sandwich ELISA.

Capture antibody: RPS17 Recombinant antibody, PBS Only (Capture) 83848-1-PBS (240851B3). 100 µg. Concentration 1 mg/mL.

Detection antibody: RPS17 Recombinant antibody, PBS Only (Detector) 83848-2-PBS (240851D10). 100 µg. Concentration 1 mg/mL.

Alternative RPS17 matched antibody pairs: MP00785-2

Unconjugated rabbit recombinant monoclonal antibody pair in PBS only storage buffer at a concentration of 1 mg/mL, ready for conjugation. Created using Proteintech's proprietary in-house recombinant technology. Recombinant production enables unrivalled batch-to-batch consistency, easy scale-up, and future security of supply.

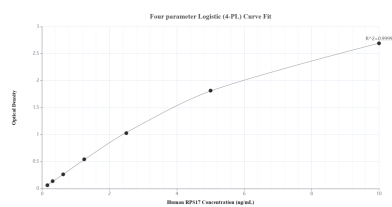
Matched antibody pairs are designed for use in a variety of assays and platforms that require matched antibody pairs.

Antibody use should be optimized for each application and assay.

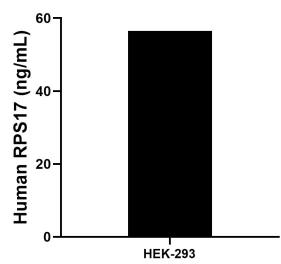
## Storage

Storage:  
Store at -80°C.  
**The product is shipped with ice packs. Upon receipt, store it immediately at -80°C**  
Storage buffer:  
PBS only

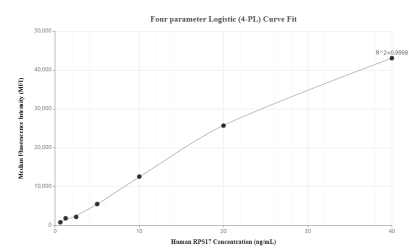
## Selected Validation Data



Sandwich ELISA standard curve of MP00785-1, Human RPS17 Recombinant Matched Antibody Pair - PBS only. 83848-1-PBS was coated to a plate as the capture antibody and incubated with serial dilutions of standard Ag9334. 83848-2-PBS was HRP conjugated as the detection antibody. Range: 0.156-10 ng/mL



The mean RPS17 concentration was determined to be 56.46 ng/mL in HEK-293 cell extract based on a 1.20 mg/mL extract load.



Cytometric bead array standard curve of MP00785-1, RPS17 Recombinant Matched Antibody Pair, PBS Only. Capture antibody: 83848-1-PBS. Detection antibody: 83848-2-PBS. Standard: Ag9334. Range: 0.625-40 ng/mL