

PD-L2/B7-DC Recombinant Matched Antibody Pair, PBS Only

Catalog Number: MP00778-1

Capture Antibody Information

Catalog Number:
83158-3-PBS

Host:
Rabbit

Isotype:
IgG

Purification Method:
Protein A purification

Clone ID:
230514C6

Reactivity:
human

GenBank:
BC074766

Immunogen Catalog Number:
Eg0507

Conjugate:
Unconjugated

Full name:
programmed cell death 1 ligand 2

Gene ID:
80380

Detection Antibody Information

Catalog Number:
83158-1-PBS

Host:
Rabbit

Isotype:
IgG

Purification Method:
Protein A purification

Clone ID:
230514A2

Reactivity:
human

GenBank:
BC074766

Immunogen Catalog Number:
Eg0507

Conjugate:
Unconjugated

Full name:
programmed cell death 1 ligand 2

Gene ID:
80380

Applications

Tested Applications:
Cytometric bead array, Sandwich ELISA

Range:
0.625-20 ng/mL (Cytometric Bead Array)
15.6-1000 pg/mL (Sandwich ELISA)

Recommended Dilutions:
It is recommended that this reagent should be titrated in each testing system to obtain optimal results.

Product Information

MP00778-1 targets PD-L2/B7-DC in immunoassays as a matched antibody pair. Validated in Cytometric bead array, Sandwich ELISA.

Capture antibody: PD-L2/B7-DC Recombinant antibody, PBS Only (Capture) 83158-3-PBS (230514C6). 100 µg. Concentration 1 mg/mL.

Detection antibody: PD-L2/B7-DC Recombinant antibody, PBS Only (Detector) 83158-1-PBS (230514A2). 100 µg. Concentration 1 mg/mL.

Unconjugated rabbit recombinant monoclonal antibody pair in PBS only storage buffer at a concentration of 1 mg/mL, ready for conjugation. Created using Proteintech's proprietary in-house recombinant technology. Recombinant production enables unrivalled batch-to-batch consistency, easy scale-up, and future security of supply.

Matched antibody pairs are designed for use in a variety of assays and platforms that require matched antibody pairs.

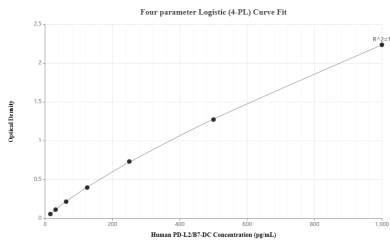
Antibody use should be optimized for each application and assay.

Storage

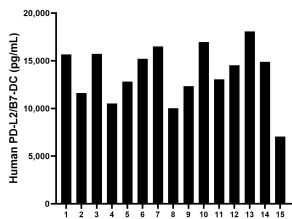
Storage:
Store at -80°C.
The product is shipped with ice packs. Upon receipt, store it immediately at -80°C

Storage buffer:
PBS only

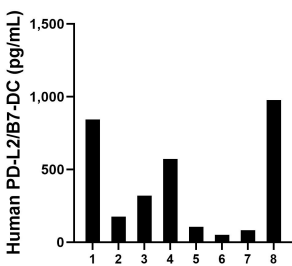
Selected Validation Data



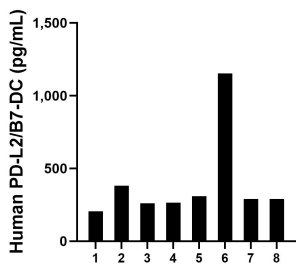
Sandwich ELISA standard curve of MP00778-1, Human PD-L2/B7-DC Recombinant Matched Antibody Pair - PBS only. 83158-3-PBS was coated to a plate as the capture antibody and incubated with serial dilutions of standard Eg0507. 83158-1-PBS was HRP conjugated as the detection antibody. Range: 15.6-1000 pg/mL



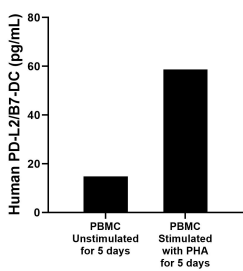
Serum of fifteen individual healthy human donors were measured. The PD-L2/B7-DC concentration of detected samples was determined to be 13,665.12 pg/mL with a range of 7,054.02 - 18,074.46 pg/mL



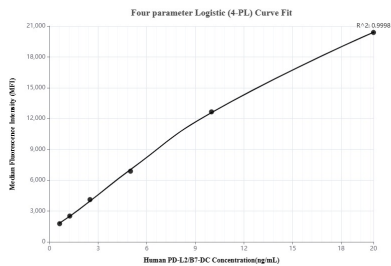
Urine of eight individual healthy human donors was measured. The PD-L2/B7-DC concentration of detected samples was determined to be 390.8 pg/mL with a range of 50.4 - 976.5 pg/mL



Human milk of eight individual healthy human donors was measured. The PD-L2/B7-DC concentration of detected samples was determined to be 394.5 pg/mL with a range of 206.2 - 1,153.2 pg/mL



For the PBMC supernatant cultured for 5 days, the mean PD-L2/B7-DC concentration was determined to be 14.8 pg/mL in unstimulated PBMC supernatant, 58.7 pg/mL in PHA stimulated PBMC supernatant.



Cytometric bead array standard curve of MP00778-1, PD-L2/B7-DC Recombinant Matched Antibody Pair, PBS Only. Capture antibody: 83158-3-PBS. Detection antibody: 83158-1-PBS. Standard: Eg0507. Range: 0.625-20 ng/mL