

HIF2 α /EPAS1 Recombinant Matched Antibody Pair, PBS Only

Catalog Number:MP00775-4

Capture Antibody Information

Catalog Number:
83790-4-PBS
Host:
Rabbit
Isotype:
IgG
Purification Method:
Protein A purification

Clone ID:
240736H7
Reactivity:
human
GenBank:
BC051338
Immunogen Catalog Number:
Ag15199

Conjugate:
Unconjugated
Full name:
endothelial PAS domain protein 1
Gene ID:
2034

Detection Antibody Information

Catalog Number:
83790-5-PBS
Host:
Rabbit
Isotype:
IgG
Purification Method:
Protein A purification

Clone ID:
240736C9
Reactivity:
human
GenBank:
BC051338
Immunogen Catalog Number:
Ag15199

Conjugate:
Unconjugated
Full name:
endothelial PAS domain protein 1
Gene ID:
2034

Applications

Tested Applications:
Sandwich ELISA

Range:
62.5-4000 pg/mL (Sandwich ELISA)

Recommended Dilutions:
It is recommended that this reagent should be titrated in each testing system to obtain optimal results.

Product Information

MP00775-4 targets HIF2 α /EPAS1 in immunoassays as a matched antibody pair. Validated in Sandwich ELISA.

Capture antibody: HIF2 α /EPAS1 Recombinant antibody, PBS Only (Capture) 83790-4-PBS (240736H7). 100 μ g. Concentration 1 mg/mL.

Detection antibody: HIF2 α /EPAS1 Recombinant antibody, PBS Only (Detector) 83790-5-PBS (240736C9). 100 μ g. Concentration 1 mg/mL.

Unconjugated rabbit recombinant monoclonal antibody pair in PBS only storage buffer at a concentration of 1 mg/mL, ready for conjugation. Created using Proteintech's proprietary in-house recombinant technology. Recombinant production enables unrivalled batch-to-batch consistency, easy scale-up, and future security of supply.

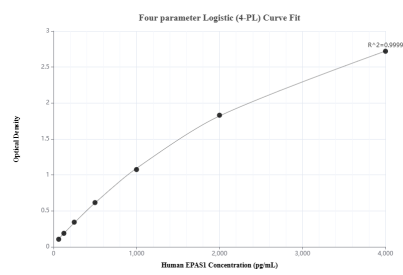
Matched antibody pairs are designed for use in a variety of assays and platforms that require matched antibody pairs.

Antibody use should be optimized for each application and assay.

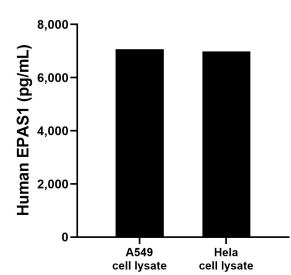
Storage

Storage:
Store at -80°C.
The product is shipped with ice packs. Upon receipt, store it immediately at -80°C
Storage buffer:
PBS only

Selected Validation Data



Sandwich ELISA standard curve of MP00775-4, Human HIF2 α /EPAS1 Recombinant Matched Antibody Pair - PBS only. 83790-4-PBS was coated to a plate as the capture antibody and incubated with serial dilutions of standard Ag15199. 83790-5-PBS was HRP conjugated as the detection antibody. Range: 62.5-4000 pg/mL



A549 and HeLa cell lysates were measured. The human HIF2 α /EPAS1 concentration of detected samples was determined to be 7,062.3 pg/mL (based on a 1.00 mg/mL extract load) in A549 cell lysate and 6,988.6 pg/mL (based on a 1.50 mg/mL extract load) in HeLa cell lysate.