

Islet 1 Recombinant Matched Antibody Pair, PBS Only

Catalog Number: **MP00771-4**

Capture Antibody Information

Catalog Number: 83784-7-PBS	Clone ID: 240833C9	Conjugate: Unconjugated
Host: Rabbit	Reactivity: human	Full name: ISL LIM homeobox 1
Isotype: IgG	GenBank: BC031213	Gene ID: 3670
Purification Method: Protein A purification	Immunogen Catalog Number: Ag33541	

Detection Antibody Information

Catalog Number: 83784-6-PBS	Clone ID: 240833B2	Conjugate: Unconjugated
Host: Rabbit	Reactivity: human	Full name: ISL LIM homeobox 1
Isotype: IgG	GenBank: BC031213	Gene ID: 3670
Purification Method: Protein A purification	Immunogen Catalog Number: Ag33541	

Applications

Tested Applications: Sandwich ELISA	Range: 0.156-10 ng/mL (Sandwich ELISA)	Recommended Dilutions: It is recommended that this reagent should be titrated in each testing system to obtain optimal results.
--	---	--

Product Information

MP00771-4 targets Islet 1 in immunoassays as a matched antibody pair. Validated in Sandwich ELISA.

Capture antibody: Islet 1 Recombinant antibody, PBS Only (Capture) 83784-7-PBS (240833C9). 100 µg. Concentration 1 mg/mL.

Detection antibody: Islet 1 Recombinant antibody, PBS Only (Detector) 83784-6-PBS (240833B2). 100 µg. Concentration 1 mg/mL.

Unconjugated rabbit recombinant monoclonal antibody pair in PBS only storage buffer at a concentration of 1 mg/mL, ready for conjugation. Created using Proteintech's proprietary in-house recombinant technology. Recombinant production enables unrivalled batch-to-batch consistency, easy scale-up, and future security of supply.

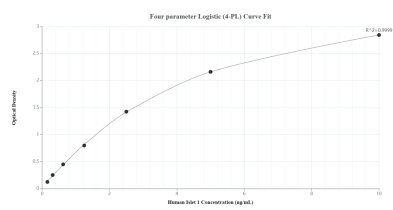
Matched antibody pairs are designed for use in a variety of assays and platforms that require matched antibody pairs.

Antibody use should be optimized for each application and assay.

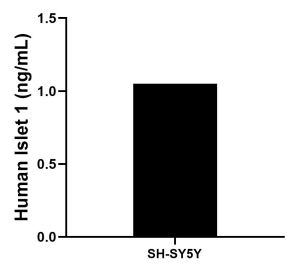
Storage

Storage:
Store at -80°C.
The product is shipped with ice packs. Upon receipt, store it immediately at -80°C
Storage buffer:
PBS only

Selected Validation Data



Sandwich ELISA standard curve of MP00771-4, Human Islet 1 Recombinant Matched Antibody Pair - PBS only. 83784-7-PBS was coated to a plate as the capture antibody and incubated with serial dilutions of standard Ag33541. 83784-6-PBS was HRP conjugated as the detection antibody. Range: 0.156-10 ng/mL.



The mean Islet 1 concentration was determined to be 1.05 ng/mL in SH-SY5Y cell extract based on a 3.40 mg/mL extract load.