

ISLR Recombinant Matched Antibody Pair, PBS Only

Catalog Number: MP00747-1

Capture Antibody Information

Catalog Number:
83782-2-PBS

Host:
Rabbit

Isotype:
IgG

Purification Method:
Protein A purification

Clone ID:
240727A12

Reactivity:
human

GenBank:
BC022478

Immunogen Catalog Number:
Ag19446

Conjugate:
Unconjugated

Full name:
immunoglobulin superfamily containing leucine-rich repeat

Gene ID:
3671

Detection Antibody Information

Catalog Number:
83782-4-PBS

Host:
Rabbit

Isotype:
IgG

Purification Method:
Protein A purification

Clone ID:
240727C1

Reactivity:
human

GenBank:
BC022478

Immunogen Catalog Number:
Ag19446

Conjugate:
Unconjugated

Full name:
immunoglobulin superfamily containing leucine-rich repeat

Gene ID:
3671

Applications

Tested Applications:
Cytometric bead array

Range:
0.156-20 ng/mL (Cytometric Bead Array)

Recommended Dilutions:
It is recommended that this reagent should be titrated in each testing system to obtain optimal results.

Product Information

MP00747-1 targets ISLR in immunoassays as a matched antibody pair. Validated in Cytometric bead array.

Capture antibody: ISLR Recombinant monoclonal antibody, PBS Only (Capture) 83782-2-PBS (240727A12). 100 µg. Concentration 1 mg/mL.

Detection antibody: ISLR Recombinant monoclonal antibody, PBS Only (Detector) 83782-4-PBS (240727C1). 100 µg. Concentration 1 mg/mL.

Unconjugated rabbit recombinant monoclonal antibody pair in PBS only storage buffer at a concentration of 1 mg/mL, ready for conjugation. Created using Proteintech's proprietary in-house recombinant technology. Recombinant production enables unrivalled batch-to-batch consistency, easy scale-up, and future security of supply.

Matched antibody pairs are designed for use in a variety of assays and platforms that require matched antibody pairs.

Antibody use should be optimized for each application and assay.

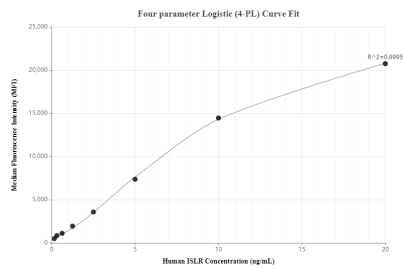
Storage

Storage:
Store at -80°C.

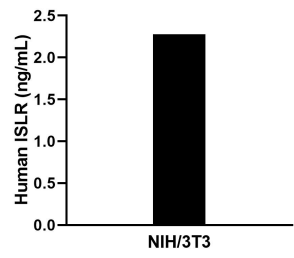
The product is shipped with ice packs. Upon receipt, store it immediately at -80°C

Storage buffer:
PBS only

Selected Validation Data



Cytometric bead array standard curve of MP00747-1, ISLR Recombinant Matched Antibody Pair, PBS Only. Capture antibody: 83782-2-PBS. Detection antibody: 83782-4-PBS. Standard: Ag19446. Range: 0.156-20 ng/mL



The mean ISLR concentration was determined to be 2.3 ng/mL in NIH/3T3 cell extract based on a 1.2 mg/mL extract load.